

For Research Use Only

# CoraLite®594-conjugated S1PR2 Polyclonal antibody



Catalog Number: CL594-21180

Featured Product

## Basic Information

Catalog Number:

CL594-21180

Size:

1000 µg/ml

Source:

Rabbit

Isotype:

IgG

Immunogen Catalog Number:

AG15470

GenBank Accession Number:

BC069598

GeneID (NCBI):

9294

UNIPROT ID:

O95136

Full Name:

sphingosine-1-phosphate receptor 2

Calculated MW:

353 aa, 39 kDa

Observed MW:

40-50 kDa

Purification Method:

Antigen affinity purification

Recommended Dilutions:

IF 1:50-1:500

Excitation/Emission maxima  
wavelengths:

588 nm / 604 nm

## Applications

Tested Applications:

IF-P

Species Specificity:

human, mouse, rat

Positive Controls:

IF : mouse brain tissue,

## Background Information

S1PR2 (sphingosine-1-phosphate receptor 2), also known as S1P2 or EDG5, is one of five G-protein-coupled receptors for sphingosine-1-phosphate (S1P), a biologically active metabolic product of sphingolipid (PMID: 18787560). S1P and its receptors have important regulatory functions in normal physiology and disease processes, particularly involving the immune, central nervous, and cardiovascular systems (PMID: 21339489). S1PR2 plays a role in acute vascular inflammation (PMID: 23723450). S1PR2 signaling is implicated in STAT3 activation (PMID: 22606352).

## Storage

Storage:

Store at -20°C. Avoid exposure to light.

Storage Buffer:

PBS with 50% Glycerol, 0.05% Proclin300, 0.5% BSA, pH 7.3.

Aliquoting is unnecessary for -20°C storage

For technical support and original validation data for this product please contact:

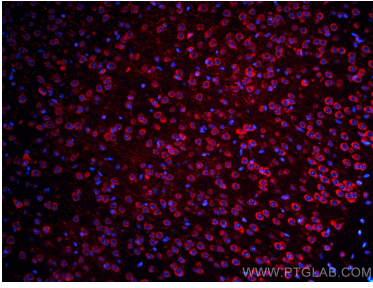
T: 4006900926

E: [Proteintech-CN@ptglab.com](mailto:Proteintech-CN@ptglab.com)

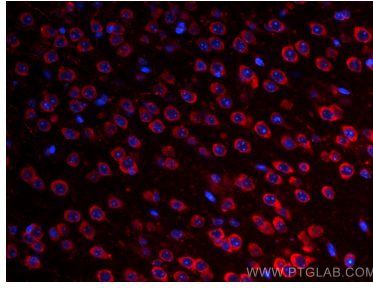
W: [ptgcn.com](http://ptgcn.com)

This product is exclusively available under Proteintech Group brand and is not available to purchase from any other manufacturer.

## Selected Validation Data



Immunofluorescent analysis of (4% PFA) fixed mouse brain tissue using CoraLite®594 S1PR2 antibody (CL594-21180) at dilution of 1:200.



Immunofluorescent analysis of (4% PFA) fixed mouse brain tissue using CoraLite®594 S1PR2 antibody (CL594-21180) at dilution of 1:200.