

For Research Use Only

CoraLite®594-conjugated Ig Lambda Light Chain Polyclonal antibody

Catalog Number:CL594-20758



Basic Information

Catalog Number:

CL594-20758

Concentration:

1000 ug/ml

Source:

Rabbit

Isotype:

IgG

Immunogen Catalog Number:

AG14693

GenBank Accession Number:

BC007782

GeneID (NCBI):

3537

Full Name:

immunoglobulin lambda constant 1
(Mcg marker)

Calculated MW:

233 aa, 25 kDa

Observed MW:

25 kDa

Purification Method:

Antigen affinity purification

Recommended Dilutions:

IF-P 1:50-1:500

Excitation/Emission maxima
wavelengths:

588 nm / 604 nm

Applications

Tested Applications:

IF-P

Species Specificity:

human

Positive Controls:

IF-P : human tonsillitis tissue,

Background Information

This antibody detects the lambda light chain of human immunoglobulin.

Storage

Storage:

Store at -20°C. Avoid exposure to light. Stable for one year after shipment.

Storage Buffer:

PBS with 50% glycerol, 0.05% Proclin300, 0.5% BSA, pH7.3

Aliquoting is unnecessary for -20°C storage

For technical support and original validation data for this product please contact:

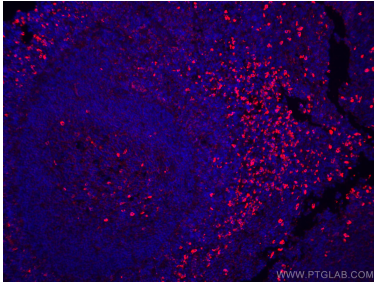
T: 4006900926

E: Proteintech-CN@ptglab.com

W: ptgcn.com

This product is exclusively available under Proteintech Group brand and is not available to purchase from any other manufacturer.

Selected Validation Data



Immunofluorescent analysis of (4% PFA) fixed human tonsillitis tissue using CoraLite@594 IgG Lambda Light Chain antibody (CL594-20758) at dilution of 1:200.