

CoraLite®594-conjugated KRAP/SSFA2 Polyclonal antibody

Catalog Number: **CL594-14157**

Basic Information

Catalog Number:

CL594-14157

Size:

1000 µg/ml

Source:

Rabbit

Isotype:

IgG

Immunogen Catalog Number:

AG5339

GenBank Accession Number:

BC028706

GeneID (NCBI):

6744

UNIPROT ID:

P28290

Full Name:

sperm specific antigen 2

Calculated MW:

138 kDa

Purification Method:

Antigen affinity purification

Recommended Dilutions:

IF-P 1:50-1:500

Excitation/Emission maxima wavelengths:

588 nm / 604 nm

Applications

Tested Applications:

IF-P

Species Specificity:

human, rat, mouse

Positive Controls:

IF-P : mouse pancreas tissue,

Background Information

KRAP (Ki-ras-induced actin-interacting protein), also known as SSFA2, CS1 or SPAG13, is a 1,259 amino acid cytoplasmic protein associated with filamentous-actin (F-actin). KRAP is strongly expressed in pancreas and testis. It is also present in colon cancer cell lines, and the expression is up-regulated by activated K-Ras. KRAP-deficient (KO) mice display decreased adiposity and improved glucose metabolism, implicating KRAP as a potential target for the prevention or treatment of obesity and related diseases. KRAP has also been suggested to be a potential target for cancer. This antibody recognizes endogenous KRAP, which migrates with an apparent molecular mass of 180 kDa in SDS-PAGE. (PMID: 14673706; 21501587; 21873152). This antibody is CL594(Ex/Em 593 nm/614 nm) conjugated.

Storage

Storage:

Store at -20°C. Avoid exposure to light. Stable for one year after shipment.

Storage Buffer:

PBS with 50% Glycerol, 0.05% Proclin300, 0.5% BSA, pH 7.3.

Aliquoting is unnecessary for -20°C storage

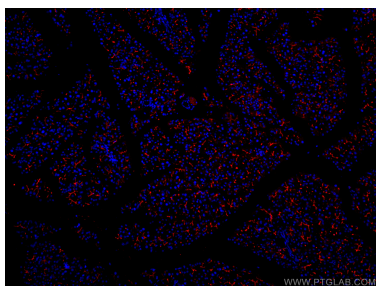
For technical support and original validation data for this product please contact:

T: 4006900926

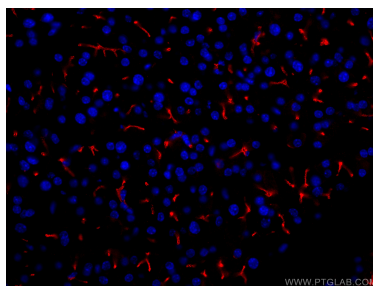
E: Proteintech-CN@ptglab.comW: ptgcn.com

This product is exclusively available under Proteintech Group brand and is not available to purchase from any other manufacturer.

Selected Validation Data



Immunofluorescent analysis of (4% PFA) fixed mouse pancreas tissue using CoraLite®594 KRAP/SSFA2 antibody (CL594-14157) at dilution of 1:200.



Immunofluorescent analysis of (4% PFA) fixed mouse pancreas tissue using CoraLite®594 KRAP/SSFA2 antibody (CL594-14157) at dilution of 1:200.