

For Research Use Only

# CoraLite®594-conjugated BOULE Polyclonal antibody



Catalog Number:CL594-13720

## Basic Information

Catalog Number:

CL594-13720

Size:

1000 µg/ml

Source:

Rabbit

Isotype:

IgG

Immunogen Catalog Number:

AG4662

GenBank Accession Number:

BC033674

GeneID (NCBI):

66037

UNIPROT ID:

Q8N9W6

Full Name:

bol, boule-like (Drosophila)

Calculated MW:

283 aa, 31 kDa

Observed MW:

38-42 kDa

Purification Method:

Antigen affinity purification

Recommended Dilutions:

IF-P 1:50-1:500

Excitation/Emission maxima wavelengths:

588 nm / 604 nm

## Applications

Tested Applications:

IF-P

Species Specificity:

human, mouse, rat

Positive Controls:

IF-P : mouse testis tissue,

## Background Information

### Storage

Storage:

Store at -20°C. Avoid exposure to light.

Storage Buffer:

PBS with 50% Glycerol, 0.05% Proclin300, 0.5% BSA, pH 7.3.

Aliquoting is unnecessary for -20°C storage

For technical support and original validation data for this product please contact:

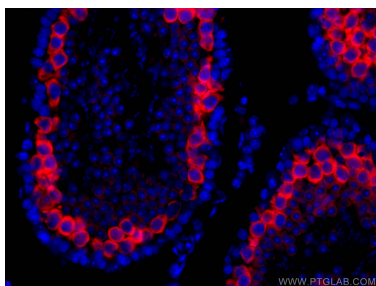
T: 4006900926

E: [Proteintech-CN@ptglab.com](mailto:Proteintech-CN@ptglab.com)

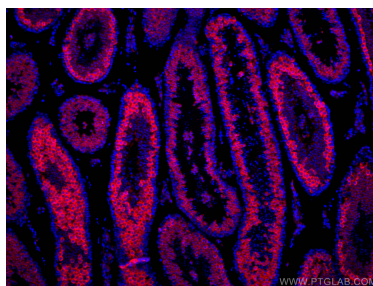
W: [ptgcn.com](http://ptgcn.com)

This product is exclusively available under Proteintech Group brand and is not available to purchase from any other manufacturer.

## Selected Validation Data



Immunofluorescent analysis of (4% PFA) fixed mouse testis tissue using CoraLite® 594 BOULE antibody (CL594-13720) at dilution of 1:100.



Immunofluorescent analysis of (4% PFA) fixed mouse testis tissue using CoraLite® 594 BOULE antibody (CL594-13720) at dilution of 1:100.