

For Research Use Only

CoraLite®594-conjugated G3BP1 Polyclonal antibody



Catalog Number:CL594-13057

Featured Product

Basic Information

Catalog Number:

CL594-13057

Size:

1000 µg/ml

Source:

Rabbit

Isotype:

IgG

Immunogen Catalog Number:

AG3728

GenBank Accession Number:

BC006997

GeneID (NCBI):

10146

UNIPROT ID:

Q13283

Full Name:

GTPase activating protein (SH3 domain) binding protein 1

Calculated MW:

466 aa, 52 kDa

Observed MW:

55-60 kDa

Purification Method:

Antigen affinity purification

Recommended Dilutions:

IF/ICC 1:50-1:500

Excitation/Emission maxima wavelengths:

588 nm / 604 nm

Applications

Tested Applications:

IF/ICC, FC (Intra)

Species Specificity:

human, rat, mouse

Positive Controls:

IF/ICC : sodium arsenite treated HeLa cells,

Background Information

GAP SH3 Binding Protein 1 (G3BP1), also named as G3BP, is an effector of stress granule (SG) assembly. SG biology plays an important role in the pathophysiology of TDP-43 in ALS and FTLD-U. G3BP1 can be used as a marker of SG. It has been shown to function downstream of Ras and play a role in RNA metabolism, signal transduction, and proliferation. G3BP1 is a ubiquitously expressed protein that localizes to the cytoplasm in proliferating cells and to the nucleus in non-proliferating cells. G3BP1 has recently been implicated in cancer biology.

Storage

Storage:

Store at -20°C. Avoid exposure to light. Stable for one year after shipment.

Storage Buffer:

PBS with 50% Glycerol, 0.05% Proclin300, 0.5% BSA, pH 7.3.

Aliquoting is unnecessary for -20°C storage

For technical support and original validation data for this product please contact:

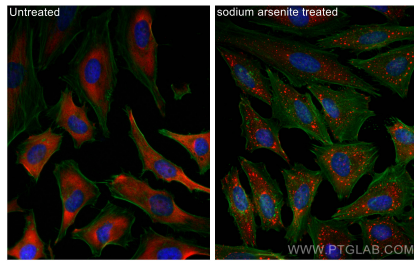
T: 4006900926

E: Proteintech-CN@ptglab.com

W: ptgcn.com

This product is exclusively available under Proteintech Group brand and is not available to purchase from any other manufacturer.

Selected Validation Data



Immunofluorescent analysis of (4% PFA) fixed sodium arsenite treated HeLa cells using CoraLite® 594 G3BP1 antibody (CL594-13057) at dilution of 1:200, CL488-Phalloidin (green).

1X10⁶ HeLa cells were intracellularly stained with 0.4 ug CoraLite® 594 Anti-Human G3BP1 (CL594-13057) (red), or 0.4 ug Control Antibody. Cells were fixed with 4% PFA and permeabilized with Flow Cytometry Perm Buffer (PF00011-C).