

For Research Use Only

# CoraLite®594-conjugated HuR/ELAVL1 Polyclonal antibody

Catalog Number: CL594-11910

Featured Product



## Basic Information

Catalog Number:

CL594-11910

Size:

1000 ug/ml

Source:

Rabbit

Isotype:

IgG

Immunogen Catalog Number:

AG2249

GenBank Accession Number:

BC003376

GeneID (NCBI):

1994

UNIPROT ID:

Q15717

Full Name:

ELAV (embryonic lethal, abnormal vision, Drosophila)-like 1 (Hu antigen R)

Calculated MW:

326 aa, 36 kDa

Observed MW:

30-37 kDa

Purification Method:

Antigen affinity purification

Recommended Dilutions:

IF/ICC 1:50-1:500

Excitation/Emission maxima wavelengths:

588 nm / 604 nm

## Applications

Tested Applications:

FC (Intra)

Species Specificity:

human, mouse, rat

Positive Controls:

IF/ICC : MCF-7 cells,

## Background Information

ELAVL1, also named as HUR, belongs to the RRM elav family. It is involved in 3'-UTR ARE-mediated MYC stabilization. ELAVL1 binds avidly to the AU-rich element in FOS and IL3/interleukin-3 mRNAs. In the case of the FOS AU-rich element, ELAVL1 binds to a core element of 27 nucleotides that contain AUUUA, AUUUUA and AUUUUUA motifs.

## Storage

Storage:

Store at -20°C. Avoid exposure to light. Stable for one year after shipment.

Storage Buffer:

PBS with 50% Glycerol, 0.05% Proclin300, 0.5% BSA, pH 7.3.

Aliquoting is unnecessary for -20°C storage

For technical support and original validation data for this product please contact:

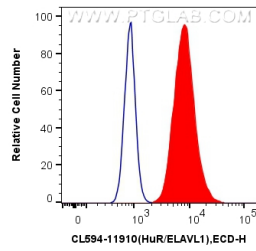
T: 4006900926

E: [Proteintech-CN@ptglab.com](mailto:Proteintech-CN@ptglab.com)

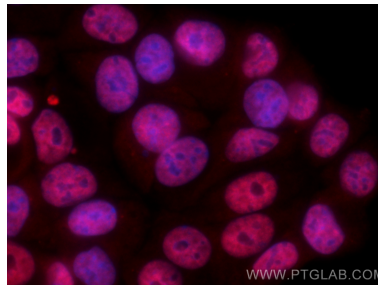
W: [ptgcn.com](http://ptgcn.com)

This product is exclusively available under Proteintech Group brand and is not available to purchase from any other manufacturer.

## Selected Validation Data



1X10<sup>6</sup> MCF-7 cells were intracellularly stained with 0.4 ug CoraLite® 594 Anti-Human HuR/ELAVL1 (CL594-11910) (red), or 0.4 ug Control Antibody. Cells were fixed with 4% PFA and permeabilized with Flow Cytometry Perm Buffer (PF00011-C).



Immunofluorescent analysis of (4% PFA) fixed MCF-7 cells using CoraLite® 594 HuR/ELAVL1 antibody (CL594-11910) at dilution of 1:200.