

For Research Use Only



CoraLite®594-conjugated IgG Lambda Light Chain Polyclonal antibody

Catalog Number: **CL594-11541**

Basic Information

Catalog Number: CL594-11541	GenBank Accession Number: BC020233	Purification Method: Antigen affinity purification
Size: 1000 µg/ml	GeneID (NCBI): 3535	Recommended Dilutions: IF 1:50-1:500
Source: Rabbit	Full Name: immunoglobulin lambda locus	Excitation/Emission maxima wavelengths: 588 nm / 604 nm
Isotype: IgG	Calculated MW: 237 aa, 25 kDa	
Immunogen Catalog Number: AG2064	Observed MW: 25 kDa	

Applications

Tested Applications:
IF-P
Species Specificity:
human

Positive Controls:
IF : human tonsillitis tissue,

Background Information

This antibody detects the lambda light chain of human IgG.

Storage

Storage:
Store at -20°C. Avoid exposure to light.
Storage Buffer:
PBS with 50% Glycerol, 0.05% Proclin300, 0.5% BSA, pH 7.3.
Aliquoting is unnecessary for -20°C storage

For technical support and original validation data for this product please contact:

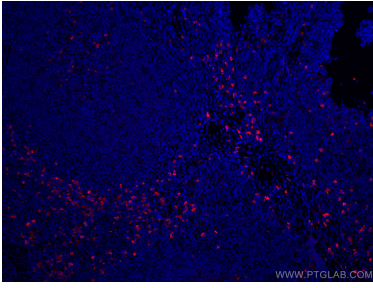
T: 4006900926

E: Proteintech-CN@ptglab.com

W: ptgcn.com

This product is exclusively available under Proteintech Group brand and is not available to purchase from any other manufacturer.

Selected Validation Data



Immunofluorescent analysis of (4% PFA) fixed human tonsillitis tissue using CoraLite®594 IgG Lambda Light Chain antibody (CL594-11541) at dilution of 1:200.