

# CoraLite®594-conjugated Coilin Polyclonal antibody

Catalog Number: **CL594-10967**

## Basic Information

**Catalog Number:**

CL594-10967

**Size:**

1000 µg/ml

**Source:**

Rabbit

**Isotype:**

IgG

**Immunogen Catalog Number:**

AG1416

**GenBank Accession Number:**

BC010385

**GeneID (NCBI):**

8161

**UNIPROT ID:**

P38432

**Full Name:**

coilin

**Calculated MW:**

576 aa, 63 kDa

**Observed MW:**

80 kDa

**Purification Method:**

Antigen affinity purification

**Recommended Dilutions:**

IF/ICC 1:50-1:500

**Excitation/Emission maxima wavelengths:**

588 nm / 604 nm

## Applications

**Tested Applications:**

IF/ICC, FC (Intra)

**Species Specificity:**

human

**Positive Controls:**

IF/ICC : HeLa cells,

## Background Information

The nuclear coiled body(CBs) and nuclear structures known as gems contain high concentrations of the survival motor neurons (SMN) protein complex. CBs and gems often colocalize, and communication between them is mediated by COIL. COIL is a component of the CBS which are involved in the function or assembly/disassembly of nucleoplasmic snRNPs. During mitosis, CBs disassemble, coinciding with a mitotic-specific phosphorylation of p80 coilin, and symmetrical dimethylation of the COIL RG box motif is a molecular switch that determines whether the SMN complex forms gems or becomes incorporated into CBs

## Storage

**Storage:**

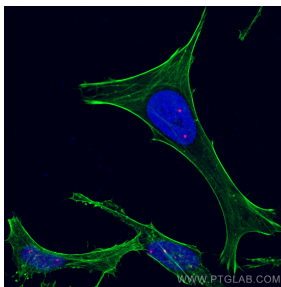
Store at -20°C. Avoid exposure to light.

**Storage Buffer:**

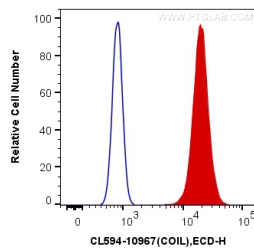
PBS with 50% Glycerol, 0.05% Proclin300, 0.5% BSA, pH 7.3.

Aliquoting is unnecessary for -20°C storage

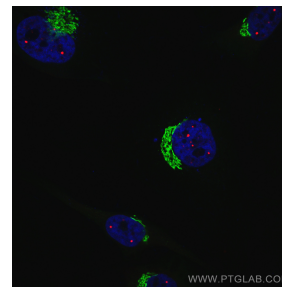
## Selected Validation Data



Immunofluorescent analysis of (4% PFA) fixed HeLa cells using CoraLite®594 Coilin antibody (CL594-10967) at dilution of 1:200, (CL488-Phalloidin, green).



1X10<sup>6</sup> HEK-293T cells were intracellularly stained with 0.4 ug CoraLite®594 Anti-Human Coilin (CL594-10967) (red), or 0.4 ug Control Antibody. Cells were fixed and permeabilized with Transcription Factor Staining Buffer Kit (PF00011).



Immunofluorescent analysis of (4% PFA) fixed HeLa cells using CoraLite®594 Coilin antibody (CL594-10967) at dilution of 1:200, CoraLite®488 GOLGA2/GM130 antibody (CL488-11308, green).