

For Research Use Only

CoraLite®568 Anti-Mouse CD107b / LAMP2 (ABL-93)



Catalog Number:CL568-65052

Basic Information

Catalog Number: CL568-65052	GenBank Accession Number: BC138718	Purification Method: Affinity purification
Size: 100ug, 500 µg/ml	GeneID (NCBI): 16784	CloneNo.: ABL-93
Source: Rat	UNIPROT ID: P17047	Recommended Dilutions: IF/ICC 1:50-1:500
Isotype: IgG2a, kappa	Full Name: lysosomal-associated membrane protein 2	Excitation/Emission maxima wavelengths: 568 nm / 587 nm

Applications

Tested Applications: FC (Intra), IF/ICC	Positive Controls: IF/ICC : NIH/3T3 cells,
Species Specificity: Mouse	

Background Information

LAMP2 (CD107b) is a Lysosomal membrane glycoprotein. LAMP2 is extensively glycosylated with asparagine-linked oligosaccharides which protect it from intracellular proteolysis (PMID: 10521503). Although LAMP-2 is localized primarily in the endosome-lysosomal membrane of cells, it is also found on the plasma membrane under certain circumstances, e.g., after platelet activation, during granulocytic differentiation and activation, and in some tumor cells (PMID: 12221139). LAMP is involved in lysosomal stability and autophagy (PMID: 12221139). This glycoprotein provides selectins with carbohydrate ligands. LAMP2 may plays a role in tumor cell metastasis (PMID 9426697).

Storage

Storage:
Store at 2-8°C. Avoid exposure to light. Stable for one year after shipment.
Storage Buffer:
PBS with 0.1% sodium azide and 0.5% BSA, pH 7.3.

For technical support and original validation data for this product please contact:

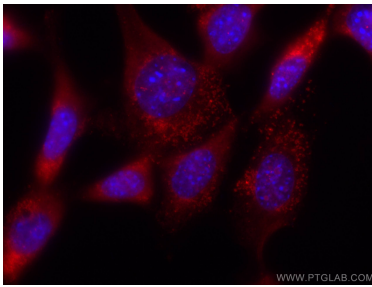
T: 4006900926

E: Proteintech-CN@ptglab.com

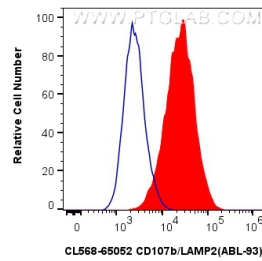
W: ptgcn.com

This product is exclusively available under Proteintech Group brand and is not available to purchase from any other manufacturer.

Selected Validation Data



Immunofluorescent analysis of (-20°C Ethanol) fixed NIH/3T3 cells using Coralite®568 CD107b antibody (CL568-65052, Clone: ABL-93) at dilution of 1:100.



1X10⁶ NIH/3T3 cells were intracellularly stained with 0.5 ug Coralite®568 Anti-Mouse CD107b / LAMP2 (CL568-65052, Clone: ABL-93) (red), or 0.5 ug Isotype Control. Cells were fixed with 4% PFA and permeabilized with Flow Cytometry Perm Buffer (PF00011-C).