

For Research Use Only

CoraLite®568 Anti-Mouse CD107a / LAMP1 (1D4B)

Catalog Number: CL568-65050



Basic Information

Catalog Number:

CL568-65050

Concentration:

100ug, 500 ug/ml

Source:

Rat

Isotype:

IgG2a, kappa

GenBank Accession Number:

BC006785

GeneID (NCBI):

16783

UNIPROT ID:

P11438

Full Name:

lysosomal-associated membrane protein 1

Purification Method:

Affinity purification

CloneNo.:

1D4B

Recommended Dilutions:

IF/ICC: 1:50-1:500

FC (Intra): 0.5 ug per 10⁶ cells in 100 µl suspension

Excitation/Emission maxima wavelengths:

568 nm / 587 nm

Applications

Tested Applications:

IF/ICC, FC (Intra)

Species Specificity:

mouse

Positive Controls:

IF/ICC : NIH/3T3 cells,

FC (Intra) : NIH/3T3 cells,

Background Information

LAMP1 (CD107a) is a heavily glycosylated membrane protein enriched in the lysosomal membrane. LAMP1 is extensively glycosylated with asparagine-linked oligosaccharides which protect it from intracellular proteolysis (PMID: 10521503). Although LAMP1 is expressed largely in the endosome-lysosomal membrane of cells, it is also found on the plasma membrane (PMID: 16168398). Elevated LAMP1 expression at the cell surface has also been detected during platelet and granulocytic cell activation, as well as in some tumor cells (PMID: 29085473). LAMP1 functions to provide selectins with carbohydrate ligands. This protein has also been shown to be a marker of degranulation on lymphocytes such as CD8+ and NK cells and may also play a role in tumor cell differentiation and metastasis (PMID: 18835598; 29085473; 9426697).

Storage

Storage:

Store at 2-8°C. Avoid exposure to light. Stable for one year after shipment.

Storage Buffer:

PBS with 0.09% sodium azide and 0.5% BSA, pH7.3

For technical support and original validation data for this product please contact:

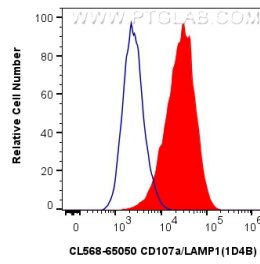
T: 4006900926

E: Proteintech-CN@ptglab.com

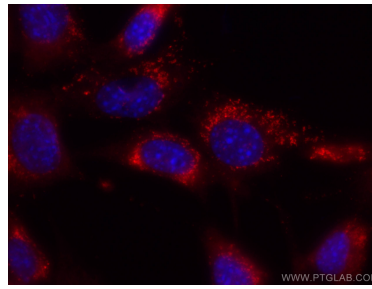
W: ptgcn.com

This product is exclusively available under Proteintech Group brand and is not available to purchase from any other manufacturer.

Selected Validation Data



1X10⁶ NIH/3T3 cells were intracellularly stained with 0.5 μ g CoraLite® 568 Anti-Mouse CD107a / LAMP1 (CL568-65050, Clone:1D4B) (red), or 0.5 μ g Isotype Control. Cells were fixed with 4% PFA and permeabilized with Flow Cytometry Perm Buffer.



Immunofluorescent analysis of (-20°C Ethanol) fixed NIH/3T3 cells using CoraLite® 568 CD107a antibody (CL568-65050, Clone: 1D4B) at dilution of 1:100.