

For Research Use Only

CoraLite® Plus 555 Anti-Mouse CD4 Rabbit Recombinant Antibody

Catalog Number:CL555-98522-3



Basic Information

Catalog Number:

CL555-98522-3

Concentration:

100ug, 500 ug/ml

Source:

Rabbit

Isotype:

IgG

Immunogen Catalog Number:

EG3847

GenBank Accession Number:

NM_013488

GeneID (NCBI):

12504

UNIPROT ID:

P06332

Full Name:

CD4 antigen

Calculated MW:

51 kDa

Purification Method:

Protein A purification

CloneNo.:

250263B7

Recommended Dilutions:

FC: 0.25 ug per 10⁶ cells in a 100 µl suspension

Excitation/Emission maxima wavelengths:

554 nm / 570 nm

Applications

Tested Applications:

FC

Species Specificity:

mouse

Positive Controls:

FC : mouse splenocytes,

Background Information

CD4 is a 55-kDa transmembrane glycoprotein expressed on T helper cells, majority of thymocytes, monocytes, macrophages, and dendritic cells (PMID: 9304802; 12213222). CD4 is an accessory protein for MHC class-II antigen/T-cell receptor interaction. It plays an important role in T helper cell development and activation (PMID: 9539765; 3112582). CD4 serves as a receptor for the human immunodeficiency virus (HIV) (PMID: 9304802).

Storage

Storage:

Store at 2-8°C. Avoid exposure to light. Stable for one year after shipment.

Storage Buffer:

PBS with 0.09% sodium azide, pH7.3

For technical support and original validation data for this product please contact:

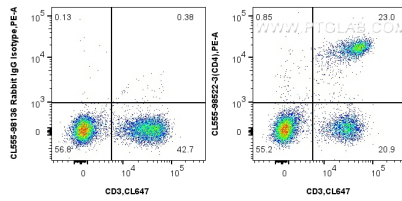
T: 4006900926

E: Proteintech-CN@ptglab.com

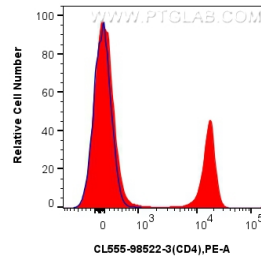
W: ptgcn.com

This product is exclusively available under Proteintech Group brand and is not available to purchase from any other manufacturer.

Selected Validation Data



1x10⁶ mouse splenocytes were surface stained with CoraLite® Plus 647 Anti-Mouse CD3 or CoraLite® Plus 555 Rabbit IgG Isotype Control Recombinant Antibody (CL555-98136, Clone: 240953C9), and 0.25 ug CoraLite® Plus 555 Anti-Mouse CD4 Rabbit RecAb (CL555-98522-3, Clone:250263B7). Cells were incubated with FC Receptor Block prior to staining. Cells were not fixed.



1x10⁶ mouse splenocytes were surface stained with CoraLite® Plus 647 Anti-Mouse CD3 and 0.25 ug CoraLite® Plus 555 Anti-Mouse CD4 Rabbit RecAb (CL555-98522-3, Clone:250263B7) (red), or CoraLite® Plus 555 Rabbit IgG Isotype Control Recombinant Antibody (CL555-98136, Clone: 240953C9) (blue). Cells were incubated with FC Receptor Block prior to staining. Cells were not fixed.