

For Research Use Only

CoraLite® Plus 555-conjugated ATP6V1B1 Recombinant monoclonal antibody

Catalog Number: CL555-83953-5



Basic Information

Catalog Number:

CL555-83953-5

Source:

Rabbit

Isotype:

IgG

Immunogen Catalog Number:

AG6332

GenBank Accession Number:

BC063411

GeneID (NCBI):

525

UNIPROT ID:

P15313

Full Name:

ATPase, H⁺ transporting, lysosomal
56/58kDa, V1 subunit B1

Calculated MW:

57 kDa

Observed MW:

56 kDa

Purification Method:

Protein A purification

CloneNo.:

240955B9

Recommended Dilutions:

IF-P: 1:50-1:500

Excitation/Emission maxima
wavelengths:

554 nm / 570 nm

Applications

Tested Applications:

IF-P

Species Specificity:

human, mouse, rat

Positive Controls:

IF-P: mouse kidney tissue,

Background Information

ATP6V1B1, also named ATP6B1, VATB and VPP3, belongs to the ATPase alpha/beta chains family. ATP6V1B1 is mainly expressed in kidney. ATP6V1B1 is essential for the proper assembly and activity of V-ATPase. In renal intercalated cells, ATP6V1B1 mediates secretion of protons (H⁺) into the urine thereby ensuring correct urinary acidification. The calculated molecular weight of ATP6V1B1 is 57 kDa.

Storage

Storage:

Store at -20°C. Avoid exposure to light. Stable for one year after shipment.

Storage Buffer:

PBS with 50% glycerol, 0.05% Proclin300, 0.5% BSA, pH7.3

Aliquoting is unnecessary for -20°C storage

For technical support and original validation data for this product please contact:

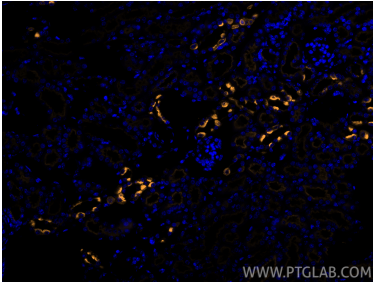
T: 4006900926

E: Proteintech-CN@ptglab.com

W: ptgcn.com

This product is exclusively available under Proteintech Group brand and is not available to purchase from any other manufacturer.

Selected Validation Data



Immunofluorescent analysis of (4% PFA) fixed paraffin-embedded mouse kidney tissue using CoraLite® Plus 555 ATP6V1B1 antibody (CL555-83953-5, Clone: 240955B9) at dilution of 1:200. Heat mediated antigen retrieval with Tris-EDTA buffer (pH 9.0).