

For Research Use Only

# CoraLite® Plus 555-conjugated SREBF2 Recombinant monoclonal antibody

Catalog Number:CL555-83403



## Basic Information

Catalog Number:

CL555-83403

Source:

Rabbit

Isotype:

IgG

Immunogen Catalog Number:

AG28205

GenBank Accession Number:

BC056158

GeneID (NCBI):

6721

UNIPROT ID:

Q12772

Full Name:

sterol regulatory element binding  
transcription factor 2

Calculated MW:

124 kDa

Purification Method:

Protein A purification

CloneNo.:

240451A12

Recommended Dilutions:

IF/ICC: 1:50-1:500

Excitation/Emission maxima  
wavelengths:

554 nm / 570 nm

## Applications

Tested Applications:

IF/ICC

Species Specificity:

human

Positive Controls:

IF/ICC : HeLa cells,

## Background Information

SREBF2, also named as BHLHD2, is a 1141 amino acid protein, which contains 1 bHLH domain and belongs to the SREBP family. SREBF2 localizes in the endoplasmic reticulum membrane and is ubiquitously expressed in adult and fetal tissues. SREBF2 as a transcriptional activator is required for lipid homeostasis.

## Storage

Storage:

Store at -20°C. Avoid exposure to light. Stable for one year after shipment.

Storage Buffer:

PBS with 50% glycerol, 0.05% Proclin300, 0.5% BSA, pH7.3

Aliquoting is unnecessary for -20°C storage

For technical support and original validation data for this product please contact:

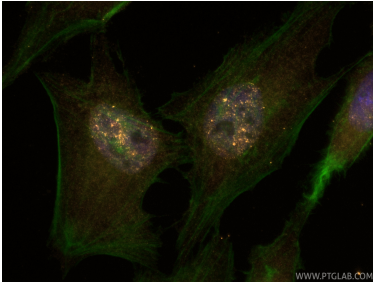
T: 4006900926

E: Proteintech-CN@ptglab.com

W: ptgcn.com

This product is exclusively available under Proteintech Group brand and is not available to purchase from any other manufacturer.

## Selected Validation Data



Immunofluorescent analysis of (4% PFA) fixed HeLa cells using CoraLite® Plus 555 SREBF2 antibody (CL555-83403, Clone: 240451A12 ) at dilution of 1:200, CL488-phalloidin (green).