

For Research Use Only



# CoraLite®555-conjugated Beta Tubulin Recombinant antibody

Catalog Number:CL555-80713

## Basic Information

Catalog Number:

CL555-80713

Size:

1000 µg/ml

Source:

Rabbit

Isotype:

IgG

Immunogen Catalog Number:

AG0117

GenBank Accession Number:

BC000748

GeneID (NCBI):

10381

UNIPROT ID:

Q13509

Full Name:

tubulin, beta 3

Calculated MW:

450 aa, 50 kDa

Observed MW:

50-55 kDa

Purification Method:

Protein A purification

CloneNo.:

2013

Recommended Dilutions:

IF/ICC 1:200-1:800

Excitation/Emission maxima wavelengths:

557 nm / 570nm

## Applications

Tested Applications:

IF/ICC

Species Specificity:

Human, mouse, rat, zebrafish

Positive Controls:

IF/ICC : C2C12 cells,

## Background Information

### Storage

Storage:

Store at -20°C. Avoid exposure to light.

Storage Buffer:

PBS with 50% Glycerol, 0.05% Proclin300, 0.5% BSA, pH 7.3.

Aliquoting is unnecessary for -20°C storage

For technical support and original validation data for this product please contact:

T: 4006900926

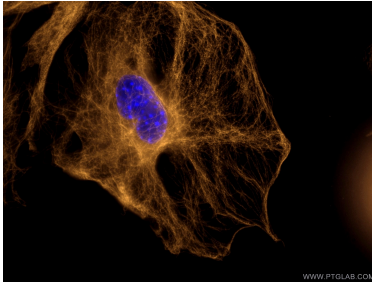
E: [Proteintech-CN@ptglab.com](mailto:Proteintech-CN@ptglab.com)

W: [ptgcn.com](http://ptgcn.com)

This product is exclusively available under Proteintech Group brand and is not available to purchase from any other manufacturer.

---

## Selected Validation Data



Immunofluorescent analysis of (4% PFA) fixed C2C12 cells using CoraLite®555 Beta Tubulin antibody (CL555-80713, Clone: 2013 ) at dilution of 1:400.