

For Research Use Only

CoraLite®555-conjugated MAP2K3 Recombinant antibody



Catalog Number:CL555-80137

Basic Information

Catalog Number:

CL555-80137

Size:

1000 µg/ml

Source:

Rabbit

Isotype:

IgG

GenBank Accession Number:

BC032478

GeneID (NCBI):

5606

UNIPROT ID:

P46734

Full Name:

mitogen-activated protein kinase
kinase 3

Calculated MW:

347 aa, 39 kDa

Observed MW:

39 kDa

Purification Method:

Protein A purification

CloneNo.:

3010

Recommended Dilutions:

IF/ICC 1:50-1:500

Excitation/Emission maxima
wavelengths:

557 nm / 570nm

Applications

Tested Applications:

IF/ICC

Species Specificity:

Human, Mouse, rat

Positive Controls:

IF/ICC : HeLa cells,

Background Information

MAP2K3, also named as MKK3, is a member of dual specificity kinase group and serves as a specific activator of p38 MAPK with MKK6. MKK3 can be phosphorylated by cytokines and environmental stress at sites Ser189 and Thr193 by MKKK proteins (MEKK 1-4). MKK3 plays a key role in cell differentiation, motility, division and death. It has been reported that MKK3 targeting may represent an effective and potentially safe therapeutic strategy to selectively kill cancer cells in colorectal cancer patients. (PMID: 31695024, 30770795, 26805700, 8622669)

Storage

Storage:

Store at -20°C. Avoid exposure to light.

Storage Buffer:

PBS with 50% Glycerol, 0.05% Proclin300, 0.5% BSA, pH 7.3.

Aliquoting is unnecessary for -20°C storage

For technical support and original validation data for this product please contact:

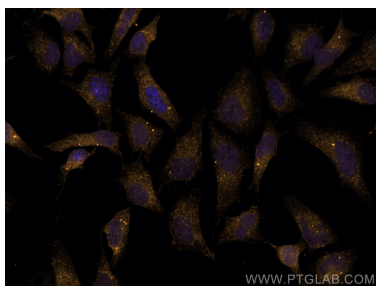
T: 4006900926

E: Proteintech-CN@ptglab.com

W: ptgcn.com

This product is exclusively available under Proteintech Group brand and is not available to purchase from any other manufacturer.

Selected Validation Data



Immunofluorescent analysis of (4% PFA) fixed HeLa cells using Coralite®555 MAP2K3 antibody (CL555-80137, Clone: 3O10) at dilution of 1:200.