

For Research Use Only

CoraLite®555-conjugated ARHGEF16 Monoclonal antibody



Catalog Number:CL555-67975

Basic Information

Catalog Number: CL555-67975	GenBank Accession Number: BC002681	Purification Method: Protein A purification
Size: 1000 µg/ml	GeneID (NCBI): 27237	CloneNo.: 1D8E3
Source: Mouse	UNIPROT ID: Q5VV41	Excitation/Emission maxima wavelengths: 557 nm / 570 nm
Isotype: IgG2b	Full Name: Rho guanine exchange factor (GEF) 16	
Immunogen Catalog Number: AG28675	Calculated MW: 80 kDa	
	Observed MW: 80 kDa	

Applications

Tested Applications:
FC (Intra)

Species Specificity:
Human

Background Information

Small GTPases of the Rho family are critical regulators of various cellular functions including actin cytoskeleton organization, activation of kinase cascades, mitogenesis, transcriptional activation and stimulation of DNA synthesis. Rho proteins cycle between a biologically active GTP-bound state and an inactive GDP-bound state. Rho guanine nucleotide exchange factor (GEF) has a crucial role in activating small GTPase by exchange GDP for GTP. ARGEF16 is one of the multiple GEF members. Although the specific function of this protein is not known yet, it is thought to be involved in protein-protein and protein-lipid interactions.

Storage

Storage:
Store at -20°C. Avoid exposure to light. Stable for one year after shipment.

Storage Buffer:
PBS with 50% Glycerol, 0.05% Proclin300, 0.5% BSA, pH 7.3.

Aliquoting is unnecessary for -20°C storage

For technical support and original validation data for this product please contact:

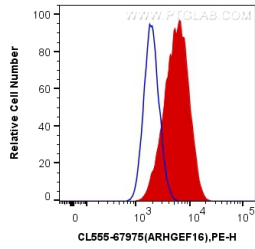
T: 4006900926

E: Proteintech-CN@ptglab.com

W: ptgcn.com

This product is exclusively available under Proteintech Group brand and is not available to purchase from any other manufacturer.

Selected Validation Data



1X10⁶ HeLa cells were intracellularly stained with 0.4 ug Coralite®555 Anti-Human ARHGEF16 (CL555-67975, Clone:1D8E3) (red), or 0.4 ug Control Antibody. Cells were fixed with 4% PFA and permeabilized with Flow Cytometry Perm Buffer (PF00011-C).