

# CoraLite®555-conjugated Phospho-P53 (Ser15) Monoclonal antibody

Catalog Number:CL555-67826

## Basic Information

**Catalog Number:**

CL555-67826

**Size:**

1000 µg/ml

**Source:**

Mouse

**Isotype:**

IgG1

**GenBank Accession Number:**

BC003596

**GeneID (NCBI):**

7157

**UNIPROT ID:**

P04637

**Full Name:**

tumor protein p53

**Calculated MW:**

44 kDa

**Observed MW:**

53 kDa

**Purification Method:**

Protein G purification

**CloneNo.:**

1H6G1

**Excitation/Emission maxima wavelengths:**

557 nm / 570 nm

## Applications

**Tested Applications:**

FC (Intra)

**Species Specificity:**

human

## Background Information

TP53, also known as P53 and NY-CO-13, belongs to the p53 family and has 9 isoforms. In SDS-Page, the observed molecular weight is about 53 kDa. TP53 acts as a tumor suppressor in many tumor types, including growth arrest or apoptosis depending on the physiological circumstances and cell types. It is involved in cell cycle regulation as a trans-activator that acts to negatively regulate cell division by controlling a set of genes required for this process. TP53 Localizes in the nucleus in most cells but found in the cytoplasm in some cells. (PMID: 26166714; PMID: 25225161)

## Storage

**Storage:**

Store at -20°C. Avoid exposure to light. Stable for one year after shipment.

**Storage Buffer:**

PBS with 50% Glycerol, 0.05% Proclin300, 0.5% BSA, pH 7.3.

Aliquoting is unnecessary for -20°C storage

For technical support and original validation data for this product please contact:

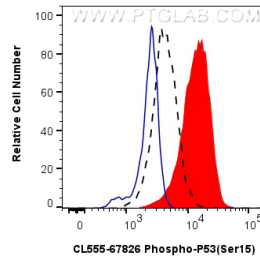
T: 4006900926

E: [Proteintech-CN@ptglab.com](mailto:Proteintech-CN@ptglab.com)

W: [ptgcn.com](http://ptgcn.com)

This product is exclusively available under Proteintech Group brand and is not available to purchase from any other manufacturer.

## Selected Validation Data



$1 \times 10^6$  UV treated HT-29 cells were intracellularly stained with 0.25 ug CoraLite®555 Anti-Human Phospho-P53 (Ser15) (CL555-67826, Clone:1H6G1) (red), or 0.25 ug CoraLite® Plus 555 Mouse IgG1 Isotype Control (1F8D3) (CL555-66360-1, Clone:1F8D3) (blue). Cells were fixed with 4% PFA and permeabilized with 90% MeOH.