

For Research Use Only

CoraLite®555-conjugated SSRP1 Monoclonal antibody



Catalog Number:CL555-67313

Basic Information

Catalog Number:

CL555-67313

Size:

1000 µg/ml

Source:

Mouse

Isotype:

IgG2b

Immunogen Catalog Number:

AG8318

GenBank Accession Number:

BC005116

GeneID (NCBI):

6749

UNIPROT ID:

Q08945

Full Name:

structure specific recognition protein

1

Calculated MW:

81 kDa

Observed MW:

86 kDa

Purification Method:

Protein A purification

CloneNo.:

3D3H4

Recommended Dilutions:

IF 1:50-1:500

Excitation/Emission maxima

wavelengths:

557 nm / 570nm

Applications

Tested Applications:

FC (Intra), IF/ICC

Species Specificity:

Human, mouse, rat

Positive Controls:

IF : HepG2 cells,

Background Information

Storage

Storage:

Store at -20°C. Avoid exposure to light.

Storage Buffer:

PBS with 50% Glycerol, 0.05% Proclin300, 0.5% BSA, pH 7.3.

Aliquoting is unnecessary for -20°C storage

For technical support and original validation data for this product please contact:

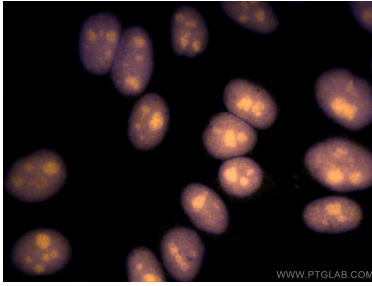
T: 4006900926

E: Proteintech-CN@ptglab.com

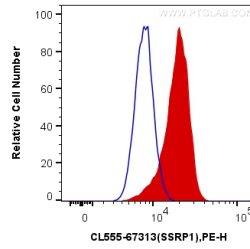
W: ptgcn.com

This product is exclusively available under Proteintech Group brand and is not available to purchase from any other manufacturer.

Selected Validation Data



Immunofluorescent analysis of (4% PFA) fixed HepG2 cells using CoraLite®555 SSRP1 antibody (CL555-67313, Clone: 3D3H4) at dilution of 1:200.



1X10⁶ HeLa cells were intracellularly stained with 0.4 ug CoraLite®555 Anti-Human SSRP1 (CL555-67313, Clone:3D3H4) (red), or 0.4 ug Control Antibody. Cells were fixed and permeabilized with Transcription Factor Staining Buffer Kit (PF00011).