

For Research Use Only

CoraLite®555-conjugated DDX21 Monoclonal antibody



Catalog Number:CL555-66925

Basic Information

Catalog Number:

CL555-66925

Size:

1000 µg/ml

Source:

Mouse

Isotype:

IgG1

Immunogen Catalog Number:

AG17850

GenBank Accession Number:

BC008071

GeneID (NCBI):

9188

UNIPROT ID:

Q9NR30

Full Name:

DEAD (Asp-Glu-Ala-Asp) box
polypeptide 21

Calculated MW:

783 aa, 87 kDa

Observed MW:

90-95 kDa

Purification Method:

Protein G purification

CloneNo.:

1B9C8

Recommended Dilutions:

IF/ICC 1:250-1:1000

Excitation/Emission maxima
wavelengths:

557 nm / 570nm

Applications

Tested Applications:

IF/ICC

Species Specificity:

Human

Positive Controls:

IF/ICC : HepG2 cells,

Background Information

DDX21 protein belongs to DEAD box protein family which is characterized by the conserved motif Asp-Glu-Ala-Asp (DEAD). As a putative RNA helicase, DDX21 unwinds double-stranded RNA, folds single-stranded RNA and is involved in process including ribosomal RNA biogenesis, RNA editing and general transcription. Interaction of DDX21 and c-Jun was reported in ribosomal RNA processing.

Storage

Storage:

Store at -20°C. Avoid exposure to light. Stable for one year after shipment.

Storage Buffer:

PBS with 50% Glycerol, 0.05% Proclin300, 0.5% BSA, pH 7.3.

Aliquoting is unnecessary for -20°C storage

For technical support and original validation data for this product please contact:

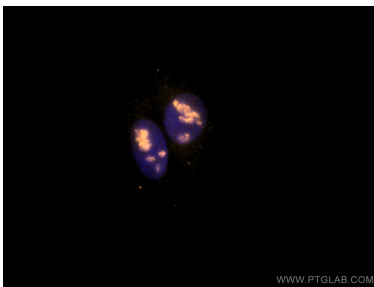
T: 4006900926

E: Proteintech-CN@ptglab.com

W: ptgcn.com

This product is exclusively available under Proteintech Group brand and is not available to purchase from any other manufacturer.

Selected Validation Data



Immunofluorescent analysis of (4% PFA) fixed HepG2 cells using CoraLite®555 DDX21 antibody (CL555-66925, Clone: 1B9C8) at dilution of 1:500.