

For Research Use Only

# CoraLite®555-conjugated Bcl2 Monoclonal antibody



Catalog Number:CL555-66799

## Basic Information

<b>Catalog Number:</b> CL555-66799	<b>GenBank Accession Number:</b> NM-009741	<b>Purification Method:</b> Protein G purification
<b>Size:</b> 1000 µg/ml	<b>GeneID (NCBI):</b> 12043	<b>CloneNo.:</b> 1B5B9
<b>Source:</b> Mouse	<b>Full Name:</b> B-cell leukemia/lymphoma 2	<b>Recommended Dilutions:</b> IF 1:50-1:500
<b>Isotype:</b> IgG1	<b>Calculated MW:</b> 26 kDa	<b>Excitation/Emission maxima wavelengths:</b> 557 nm / 570nm
<b>Immunogen Catalog Number:</b> AG24261	<b>Observed MW:</b> 26 kDa	

## Applications

<b>Tested Applications:</b> FC (Intra), IF/ICC	<b>Positive Controls:</b> IF : NIH/3T3 cells,
<b>Species Specificity:</b> mouse	

## Background Information

Bcl2 is a member of the B cell lymphoma 2 protein family. Members of this family regulate cell death in multiple cell types and can have either proapoptotic or antiapoptotic activities. The protein encoded by this gene inhibits mitochondrial-mediated apoptosis. This protein is an integral outer mitochondrial membrane protein that functions as part of signaling pathway that controls mitochondrial permeability in response to apoptotic stimuli. This protein may also play a role in neuron cell survival and autophagy. Abnormal expression and chromosomal translocations of this gene are associated with cancer progression in numerous tissues.

## Storage

**Storage:**  
Store at -20°C. Avoid exposure to light.  
**Storage Buffer:**  
PBS with 50% Glycerol, 0.05% Proclin300, 0.5% BSA, pH 7.3.  
Aliquoting is unnecessary for -20°C storage

For technical support and original validation data for this product please contact:

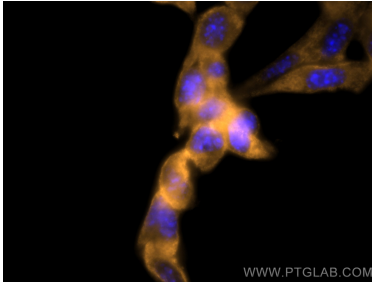
T: 4006900926

E: [Proteintech-CN@ptglab.com](mailto:Proteintech-CN@ptglab.com)

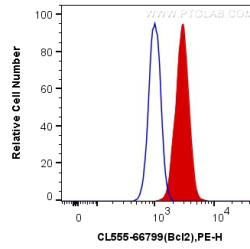
W: [ptgcn.com](http://ptgcn.com)

**This product is exclusively available under Proteintech Group brand and is not available to purchase from any other manufacturer.**

## Selected Validation Data



Immunofluorescent analysis of (-20°C Methanol) fixed NIH/3T3 cells using CoraLite®555 Bcl2 antibody (CL555-66799, Clone: 1B5B9) at dilution of 1:200.



1X10<sup>6</sup> NIH/3T3 cells were intracellularly stained with 0.4 ug CoraLite®555 Anti-Mouse Bcl2 (CL555-66799, Clone:1B5B9) (red), or 0.4 ug Control Antibody. Cells were fixed with 4% PFA and permeabilized with Flow Cytometry Perm Buffer (PF00011-C).