

For Research Use Only

CoraLite®555-conjugated PTPN11/SHP2 Monoclonal antibody



Catalog Number:CL555-66795

Basic Information

Catalog Number:

CL555-66795

Size:

1000 µg/ml

Source:

Mouse

Isotype:

IgG1

Immunogen Catalog Number:

AG13649

GenBank Accession Number:

BC008692

GeneID (NCBI):

5781

UNIPROT ID:

Q06124

Full Name:

protein tyrosine phosphatase, non-receptor type 11

Calculated MW:

597 aa, 68 kDa

Observed MW:

68 kDa

Purification Method:

Protein G purification

CloneNo.:

3F8A8

Excitation/Emission maxima
wavelengths:

557 nm / 570 nm

Applications

Tested Applications:

FC (Intra)

Species Specificity:

Human, Mouse, Rat

Background Information

PTPN11 (protein tyrosine phosphatase, non-receptor type 11) is also named as PTP-1D, PTP2, PTP2C, PTP3, SHP2, CFC, CFC, BTP3, SH-PTP2, SH-PTP3, MGC14433 and belongs to the protein-tyrosine phosphatase family and non-receptor class 2 subfamily. It modulates and regulates signaling through numerous pathways, many of which are active in the developing endocardial cushions and implicated the ERK pathway as a central mechanism (PMID: 19017799). Its signaling may play equally important roles in retinal survival in both physiological and pathological conditions (PMID: 21576358). Defects in PTPN11 are the cause of LEOPARD syndrome type 1 (LEOPARD1), Noonan syndrome type 1 (NS1), juvenile myelomonocytic leukemia (JMML) and metachondromatosis (MC). It has 3 isoforms produced by alternative splicing.

Storage

Storage:

Store at -20°C. Avoid exposure to light. Stable for one year after shipment.

Storage Buffer:

PBS with 50% Glycerol, 0.05% Proclin300, 0.5% BSA, pH 7.3.

Aliquoting is unnecessary for -20°C storage

For technical support and original validation data for this product please contact:

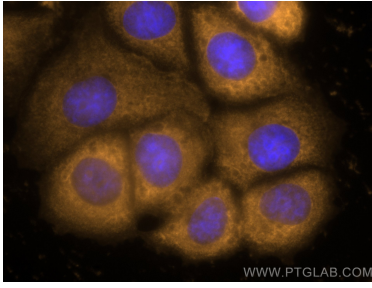
T: 4006900926

E: Proteintech-CN@ptglab.com

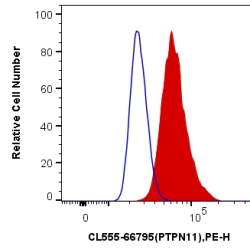
W: ptgcn.com

This product is exclusively available under Proteintech Group brand and is not available to purchase from any other manufacturer.

Selected Validation Data



Immunofluorescent analysis of (-20°C Ethanol) fixed MCF-7 cells using CoraLite®555 PTPN11 antibody (CL555-66795, Clone: 3F8A8) at dilution of 1:200.



1X10⁶ MCF-7 cells were intracellularly stained with 0.4 ug CoraLite®555 Anti-Human PTPN11 (CL555-66795, Clone:3F8A8) (red), or 0.4 ug Control Antibody. Cells were fixed with 4% PFA and permeabilized with Flow Cytometry Perm Buffer (PF00011-C).