

CoraLite®555-conjugated STK11/LKB1 Monoclonal antibody

Catalog Number: **CL555-66719**

Basic Information

Catalog Number:

CL555-66719

Size:

1000 µg/ml

Source:

Mouse

Isotype:

IgG1

Immunogen Catalog Number:

AG13436

GenBank Accession Number:

BC007981

GeneID (NCBI):

6794

UNIPROT ID:

Q15831

Full Name:

serine/threonine kinase 11

Calculated MW:

49 kDa

Observed MW:

45-49 kDa

Purification Method:

Protein G purification

CloneNo.:

1H8E4

Recommended Dilutions:

IF/ICC 1:200-1:800

Excitation/Emission maxima wavelengths:

557 nm / 570 nm

Applications

Tested Applications:

IF/ICC

Species Specificity:

Human, Mouse, Rat

Positive Controls:

IF/ICC : HeLa cells,

Background Information

STK11 (serine/threonine-protein kinase 11) is also named as LKB1, PJS, and belongs to the protein kinase superfamily. It controls the activity of AMP-activated protein kinase (AMPK) family members, thereby playing a role in various processes such as cell metabolism, cell polarity, apoptosis and DNA damage response. The tumour suppressor protein LKB1 is a serine/threonine kinase that has been causally linked to Peutz-Jeghers syndrome (PJS). Defects in STK11 are a cause of Peutz-Jeghers syndrome (PJS) and defects in STK11 have been associated with testicular germ cell tumor (TGCT) and some sporadic cancers, especially lung cancers. STK11 has 2 isoforms with MW of 49 kDa and 45 kDa, and can be detected as 50-54 kDa after posttranslational modification.

Storage

Storage:

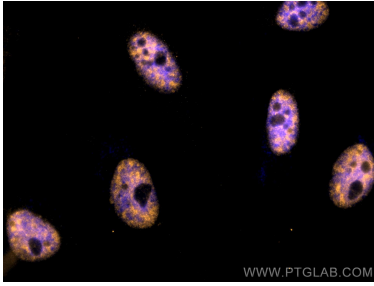
Store at -20°C. Avoid exposure to light. Stable for one year after shipment.

Storage Buffer:

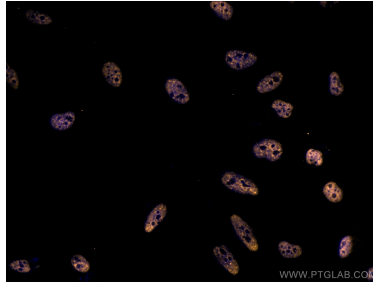
PBS with 50% Glycerol, 0.05% Proclin300, 0.5% BSA, pH 7.3.

Aliquoting is unnecessary for -20°C storage

Selected Validation Data



Immunofluorescent analysis of (4% PFA) fixed HeLa cells using CoraLite®555 STK11/LKB1 antibody (CL555-66719, Clone: 1H8E4) at dilution of 1:400.



Immunofluorescent analysis of (4% PFA) fixed HeLa cells using CoraLite®555 STK11/LKB1 antibody (CL555-66719, Clone: 1H8E4) at dilution of 1:400.