

For Research Use Only

CoraLite®555-conjugated CALD1 Monoclonal antibody



Catalog Number: CL555-66693

Featured Product

Basic Information

Catalog Number:

CL555-66693

Size:

1000 µg/ml

Source:

Mouse

Isotype:

IgG2b

Immunogen Catalog Number:

AG13676

GenBank Accession Number:

BC040354

GeneID (NCBI):

800

UNIPROT ID:

Q05682

Full Name:

caldesmon 1

Calculated MW:

538 aa, 63 kDa

Observed MW:

70 kDa-75 kDa

Purification Method:

Protein A purification

CloneNo.:

1E1C11

Recommended Dilutions:

IF 1:50-1:500

Excitation/Emission maxima
wavelengths:

557 nm / 570nm

Applications

Tested Applications:

FC (Intra), IF/ICC

Species Specificity:

Human, Mouse, Rat

Positive Controls:

IF : HeLa cells,

Background Information

Storage

Storage:

Store at -20°C. Avoid exposure to light.

Storage Buffer:

PBS with 50% Glycerol, 0.05% Proclin300, 0.5% BSA, pH 7.3.

Aliquoting is unnecessary for -20°C storage

For technical support and original validation data for this product please contact:

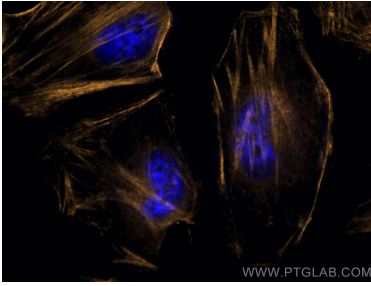
T: 4006900926

E: Proteintech-CN@ptglab.com

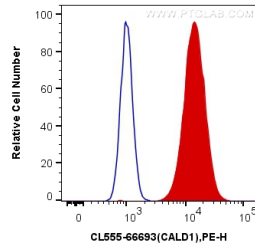
W: ptgcn.com

This product is exclusively available under Proteintech Group brand and is not available to purchase from any other manufacturer.

Selected Validation Data



Immunofluorescent analysis of (4% PFA) fixed HeLa cells using CoraLite@555 CALD1 antibody (CL555-66693, Clone: 1E1C11) at dilution of 1:200.



1X10⁶ NIH/3T3 cells were intracellularly stained with 0.4 ug CoraLite@555 Anti-Human CALD1 (CL555-66693, Clone:1E1C11) (red), or 0.4 ug Control Antibody. Cells were fixed with 4% PFA and permeabilized with Flow Cytometry Perm Buffer (PF00011-C).