

For Research Use Only

# CoraLite®555-conjugated TOM22 Monoclonal antibody

Catalog Number: CL555-66562



## Basic Information

Catalog Number:

CL555-66562

Source:

Mouse

Isotype:

IgG2a

Immunogen Catalog Number:

AG1797

GenBank Accession Number:

BC009363

GeneID (NCBI):

56993

UNIPROT ID:

Q9NS69

Full Name:

translocase of outer mitochondrial  
membrane 22 homolog (yeast)

Calculated MW:

15 kDa

Observed MW:

22 kDa

Purification Method:

Protein A purification

CloneNo.:

1C2B11

Recommended Dilutions:

IF/ICC: 1:50-1:500

FC (Intra): 0.40 ug per 10<sup>6</sup> cells in a  
100 µl suspension

Excitation/Emission maxima  
wavelengths:

557 nm / 570 nm

## Applications

Tested Applications:

IF/ICC, FC (Intra)

Species Specificity:

human

Positive Controls:

IF/ICC : HepG2 cells,

FC (Intra) : HEK-293 cells,

## Background Information

Tom22 is a central receptor component of the translocase of the outer membrane of mitochondria responsible for the recognition and translocation of cytosolically synthesized mitochondrial preproteins. It is showed in UniProt that phosphorylation is performed at three positions of this protein which may increase the molecular weight. Catalog#66562-1-Ig recognises the 22 kDa protein larger than the calculated MW which is 15 kDa. Besides, it has been reported the MV of TOMM22 is 22 kDa (PMID:19285029).

## Storage

Storage:

Store at -20°C. Avoid exposure to light. Stable for one year after shipment.

Storage Buffer:

PBS with 50% glycerol, 0.05% Proclin300, 0.5% BSA, pH7.3

Aliquoting is unnecessary for -20°C storage

For technical support and original validation data for this product please contact:

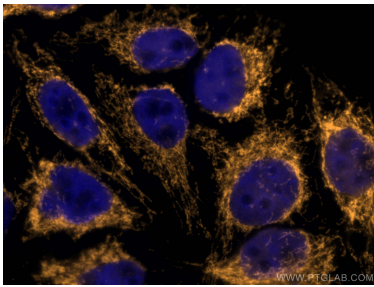
T: 4006900926

E: [Proteintech-CN@ptglab.com](mailto:Proteintech-CN@ptglab.com)

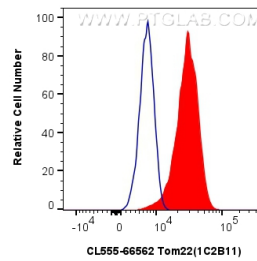
W: [ptgcn.com](http://ptgcn.com)

This product is exclusively available under Proteintech Group brand and is not available to purchase from any other manufacturer.

## Selected Validation Data



Immunofluorescent analysis of (4% PFA) fixed HepG2 cells using CoraLite®555 Tom22 antibody (CL555-66562, Clone: 1C2B11) at dilution of 1:200.



$1 \times 10^6$  HEK-293 cells were intracellularly stained with 0.4  $\mu$ g CoraLite®555-conjugated Tom22 Monoclonal antibody (CL555-66562, Clone:1C2B11) (red), or 0.4  $\mu$ g CoraLite® Plus 555 Mouse IgG2a isotype control (11A1B2) (CL555-66360-2, Clone: 11A1B2) (blue). Cells were fixed with 4% PFA and permeabilized with Flow Cytometry Perm Buffer.