

For Research Use Only

# CoraLite®555-conjugated SLP76 Monoclonal antibody

Catalog Number:CL555-66465



## Basic Information

Catalog Number: CL555-66465	GenBank Accession Number: BC016618	Purification Method: Protein G purification
Size: 1000 ug/ml	GeneID (NCBI): 3937	CloneNo.: 4H10B1
Source: Mouse	UNIPROT ID: Q13094	Recommended Dilutions: IF/ICC 1:50-1:500
Isotype: IgG1	Full Name: lymphocyte cytosolic protein 2 (SH2 domain containing leukocyte protein of 76kDa)	Excitation/Emission maxima wavelengths: 557 nm / 570 nm
Immunogen Catalog Number: AG3432	Calculated MW: 533 aa, 60 kDa	

## Applications

Tested Applications: IF/ICC, FC (Intra)	Positive Controls: IF/ICC : HeLa cells,
Species Specificity: human	

## Background Information

LCP2, also named as SLP76, is an adapter protein that acts as a substrate of the T cell antigen receptor (TCR)-activated protein tyrosine kinase pathway. It contains an N-terminal leucine Zip motif, a tyrosine-rich domain, a proline-rich domain and a C-terminal SH2 domain. It is constitutively associated with the growth factor receptor-bound protein 2 (Grb2)-related adapter protein 2 (Grap2, a.k.a. GADS) through the interaction of its proline residues with one of the SH3 domains of Grap2. SLP76 associates with growth factor receptor bound protein 2 (Grap2), and is thought to play a role TCR-mediated intracellular signal transduction. SLP76 is also expressed by mast cells, and mast cell activation was markedly impaired in SLP76-deficient mice.

## Storage

**Storage:**  
Store at -20°C. Avoid exposure to light. Stable for one year after shipment.  
**Storage Buffer:**  
PBS with 50% Glycerol, 0.05% Proclin300, 0.5% BSA, pH 7.3.  
Aliquoting is unnecessary for -20°C storage

For technical support and original validation data for this product please contact:

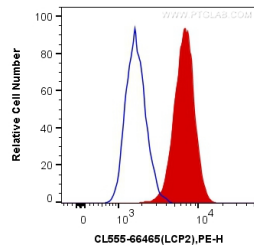
T: 4006900926

E: [Proteintech-CN@ptglab.com](mailto:Proteintech-CN@ptglab.com)

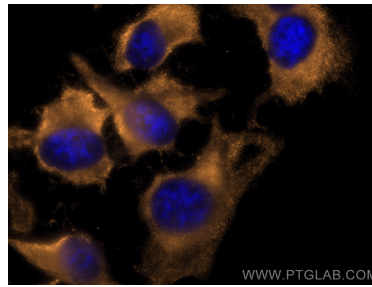
W: [ptgcn.com](http://ptgcn.com)

This product is exclusively available under Proteintech Group brand and is not available to purchase from any other manufacturer.

## Selected Validation Data



1X10<sup>6</sup> Jurkat cells were intracellularly stained with 0.4 ug CoraLite® 555 Anti-Human SLP76 (CL555-66465, Clone:4H10B1) (red), or 0.4 ug Control Antibody. Cells were fixed with 4% PFA and permeabilized with Flow Cytometry Perm Buffer (PF00011-C).



Immunofluorescent analysis of (-20°C Ethanol) fixed HeLa cells using CoraLite® 555 SLP76 antibody (CL555-66465, Clone: 4H10B1 ) at dilution of 1:200.