

For Research Use Only

# CoraLite® Plus 555 Mouse IgG1 Isotype Control (1F8D3)

Catalog Number: CL555-66360-1



## Basic Information

Catalog Number:

CL555-66360-1

Concentration:

100ug, 200 ug/ml

Source:

Mouse

Isotype:

IgG1

GenBank Accession Number:

GeneID (NCBI):

Full Name:

Purification Method:

Protein G purification

CloneNo.:

1F8D3

Recommended Dilutions:

FC: 0.2 ug per 10<sup>6</sup> cells in 100 µl suspension

Excitation/Emission maxima wavelengths:

554 nm / 570 nm

## Applications

Tested Applications:

FC

Species Specificity:

megathura crenulata

Positive Controls:

FC :

## Background Information

This antibody is used as the isotype control of mouse IgG1 (Kappa). It can be used as the isotype control in Flow Cytometry, Immuno-Precipitation and other experiments. The immunogen of this antibody is Keyhole Limpet Hemocyanin (KLH).

## Storage

Storage:

Store at 2-8°C. Avoid exposure to light. Stable for one year after shipment.

Storage Buffer:

PBS with 0.09% sodium azide and 0.5% BSA, pH7.3

For technical support and original validation data for this product please contact:

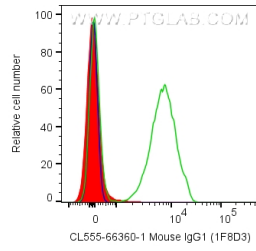
T: 4006900926

E: [Proteintech-CN@ptglab.com](mailto:Proteintech-CN@ptglab.com)

W: [ptgcn.com](http://ptgcn.com)

**This product is exclusively available under Proteintech Group brand and is not available to purchase from any other manufacturer.**

## Selected Validation Data



1X10<sup>6</sup> human PBMCs were surface stained with 0.2 ug CoraLite® Plus 555 Anti-IgG1 Isotype Control (CL750-66360-1, Clone:1F8D3) (red), CoraLite® Plus 555 Anti-Human CD3 (UCHT1) (green), or unstained (blue). Cells were not fixed. Lymphocytes were gated.