

# CoraLite®555-conjugated CAPRIN1 Monoclonal antibody

Catalog Number: **CL555-66352**

## Basic Information

**Catalog Number:**

CL555-66352

**Size:**

1000 µg/ml

**Source:**

Mouse

**Isotype:**

IgG1

**Immunogen Catalog Number:**

AG7413

**GenBank Accession Number:**

BC001731

**GeneID (NCBI):**

4076

**UNIPROT ID:**

Q14444

**Full Name:**

cell cycle associated protein 1

**Calculated MW:**

78 kDa

**Observed MW:**

116 kDa

**Purification Method:**

Protein G purification

**CloneNo.:**

6B10F11

**Recommended Dilutions:**

IF/ICC 1:50-1:500

**Excitation/Emission maxima  
wavelengths:**

557 nm / 570nm

## Applications

**Tested Applications:**

IF/ICC

**Species Specificity:**

human

**Positive Controls:**

IF/ICC : HeLa cells,

## Background Information

CAPRIN1(Caprin-1) is a cytoplasmic phosphoprotein which may regulate the transport and translation of mRNAs of proteins involved in synaptic plasticity in neurons and cell proliferation and migration in multiple cell types. Its levels, except in the brain, are tightly correlated with cellular proliferation. Suppression of expression of human Caprin-1 resulted in slowing of the proliferation rate, which suggests its essential for normal cellular proliferation.

## Storage

**Storage:**

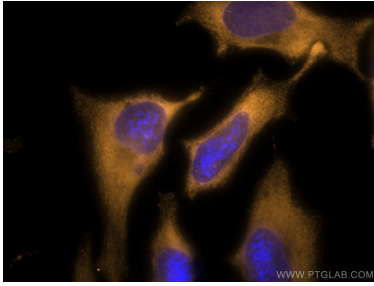
Store at -20°C. Avoid exposure to light. Stable for one year after shipment.

**Storage Buffer:**

PBS with 50% Glycerol, 0.05% Proclin300, 0.5% BSA, pH 7.3.

Aliquoting is unnecessary for -20°C storage

## Selected Validation Data



Immunofluorescent analysis of (-20°C Ethanol) fixed HeLa cells using CoraLite@555 CAPRIN1 antibody (CL555-66352, Clone: 6B10F11 ) at dilution of 1:200.