

For Research Use Only

CoraLite®555-conjugated Acetyl-Tubulin (Lys40) Monoclonal antibody

Catalog Number:CL555-66200



Basic Information

Catalog Number:

CL555-66200

Concentration:

1000 µg/ml

Source:

Mouse

Isotype:

IgG1

GenBank Accession Number:

NM_006009

GeneID (NCBI):

7846

UNIPROT ID:

Q71U36

Full Name:

tubulin, alpha 1a

Calculated MW:

52 kDa

Observed MW:

50-55 kDa

Purification Method:

Protein G purification

CloneNo.:

7E5H8

Recommended Dilutions:

IF/ICC 1:50-1:500

Excitation/Emission maxima wavelengths:

557 nm / 570 nm

Applications

Tested Applications:

IF/ICC

Species Specificity:

human, mouse, rat, pig, canine

Positive Controls:

IF/ICC : MDCK cells, hTERT-RPE1 cells

Background Information

Tubulin, composed of heterodimers of alpha and beta tubulin, is the main component of microtubules which play important roles in cell motility, mitosis, and intracellular vesicle transport. Both alpha and beta tubulin undergo several posttranslational modifications such as polyglutamylolation and acetylation/deacetylation. Tubulin acetylation occurs on lysine-40 at the N-terminal of alpha tubulin and is conserved across species. The histone deacetylase HDAC6 and SIRT2 has been identified as tubulin deacetylases. Reversible acetylation of alpha tubulin may be implicated in regulating microtubule stability, cell motility, and axon regeneration. The level of acetylated tubulin has been linked to epithelial malignancies and sensitivity to chemotherapy. In addition, acetylated tubulin has been widely used as a marker for primary cilia. This antibody is specific to the acetylated tubulin; it does not recognize non-acetylated tubulin. (24268707, 23881549)

Storage

Storage:

Store at -20°C. Avoid exposure to light. Stable for one year after shipment.

Storage Buffer:

PBS with 50% Glycerol, 0.05% Proclin300, 0.5% BSA, pH 7.3.

Aliquoting is unnecessary for -20°C storage

For technical support and original validation data for this product please contact:

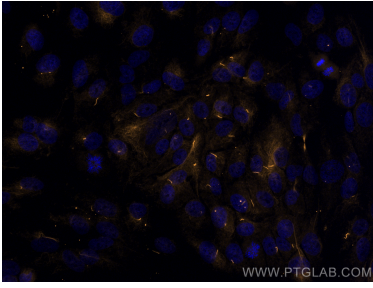
T: 4006900926

E: Proteintech-CN@ptglab.com

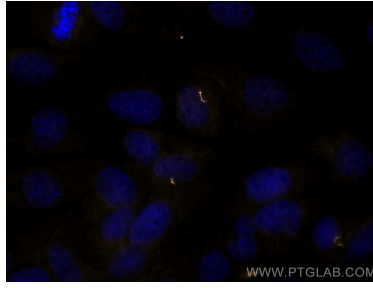
W: ptgcn.com

This product is exclusively available under Proteintech Group brand and is not available to purchase from any other manufacturer.

Selected Validation Data



Immunofluorescent analysis of (4% PFA) fixed hTERT-RPE1 cells using CoraLite®555 Acetyl-Tubulin (Lys40) antibody (CL555-66200, Clone: 7E5H8) at dilution of 1:200.



Immunofluorescent analysis of (4% PFA) fixed MDCK cells using CoraLite®555 Acetyl-Tubulin (Lys40) antibody (CL555-66200, Clone: 7E5H8) at dilution of 1:200.