

For Research Use Only

CoraLite®555-conjugated CD146/MCAM Monoclonal antibody



Catalog Number:CL555-66153

Basic Information

Catalog Number: CL555-66153	GenBank Accession Number: BC056418	Purification Method: Protein G purification
Size: 1000 µg/ml	GeneID (NCBI): 4162	CloneNo.: 4D8A9
Source: Mouse	UNIPROT ID: P43121	Recommended Dilutions: IF 1:50-1:500
Isotype: IgG1	Full Name: melanoma cell adhesion molecule	Excitation/Emission maxima wavelengths: 557 nm / 570nm
Immunogen Catalog Number: AG11855	Calculated MW: 646 aa, 72 kDa	
	Observed MW: 120 kDa	

Applications

Tested Applications: IF-P	Positive Controls: IF : human liver cancer tissue,
Species Specificity: human	

Background Information

CD146, also known as melanoma cell adhesion molecule (MCAM) or MUC18, originally identified as a biomarker of melanoma progression, is a transmembrane glycoprotein of 113-130 kDa, belonging to the immunoglobulin (Ig) superfamily (PMID: 8378324; 25993332). Structurally, it consists of five Ig domains, a transmembrane domain, and a cytoplasmic region. In normal adult tissue, CD146 is primarily expressed by vascular endothelium and smooth muscle. CD146 is a key cell adhesion protein in vascular endothelial cell activity and angiogenesis, and has been used as marker of circulating endothelium cells (CECs) (PMID: 19356677). In addition to the membrane-anchored form of CD146, a soluble form of CD146 (sCD146, 105 kDa) has also been found in human plasma and in the supernatant of cultured human endothelial cells (PMID: 9462829; 19229070; 16374253; 14597988). This antibody detects a band at approximately 120 kDa that corresponds to the molecular weight of glycosylated CD146. Treatment of lysates of HepG2 cells and LO2 cells with PNGase F, which removes oligosaccharides from N-linked glycoproteins, led to a down-shift of the detected band.

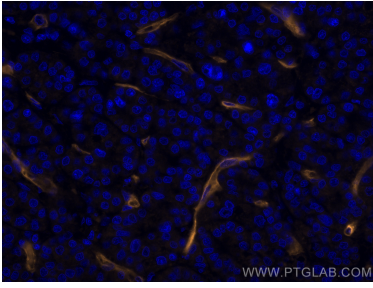
Storage

Storage:
Store at -20°C. Avoid exposure to light.
Storage Buffer:
PBS with 50% Glycerol, 0.05% Proclin300, 0.5% BSA, pH 7.3.
Aliquoting is unnecessary for -20°C storage

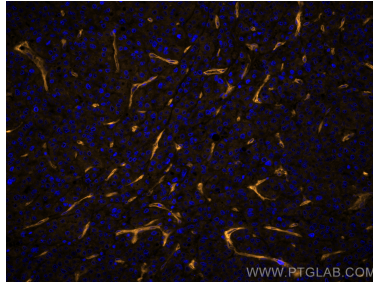
For technical support and original validation data for this product please contact:
T: 4006900926 E: Proteintech-CN@ptglab.com W: ptgcn.com

This product is exclusively available under Proteintech Group brand and is not available to purchase from any other manufacturer.

Selected Validation Data



Immunofluorescent analysis of (4% PFA) fixed human liver cancer tissue using CoraLite®555 CD146/MCAM antibody (CL555-66153, Clone: 4D8A9) at dilution of 1:200.



Immunofluorescent analysis of (4% PFA) fixed human liver cancer tissue using CoraLite®555 CD146/MCAM antibody (CL555-66153, Clone: 4D8A9) at dilution of 1:200.