

For Research Use Only



CoraLite® Plus 555 Anti-Mouse CD4 (GK1.5) Rat IgG2a Recombinant Antibody

Catalog Number: **CL555-65662**

Basic Information

Catalog Number: CL555-65662	GenBank Accession Number: BC039137	Purification Method: Protein G purification
Concentration: 100ug, 500 ug/ml	GeneID (NCBI): 12504	CloneNo.: GK1.5
Source: Rat	UNIPROT ID: P06332	Recommended Dilutions: FC: 0.25 ug per 10 ⁶ cells in a 100 µl suspension
Isotype: IgG2a	Full Name: CD4 antigen	Excitation/Emission maxima wavelengths: 554 nm / 570 nm

Applications

Tested Applications: FC	Positive Controls: FC : mouse splenocytes,
Species Specificity: mouse	

Background Information

CD4 is a 55-kDa transmembrane glycoprotein expressed on T helper cells, majority of thymocytes, monocytes, macrophages, and dendritic cells (PMID: 9304802; 12213222). CD4 is an accessory protein for MHC class-II antigen/T-cell receptor interaction. It plays an important role in T helper cell development and activation (PMID: 9539765; 3112582). CD4 serves as a receptor for the human immunodeficiency virus (HIV) (PMID: 9304802).

Storage

Storage:
Store at 2-8°C. Avoid exposure to light. Stable for one year after shipment.
Storage Buffer:
PBS with 0.09% sodium azide, pH7.3

For technical support and original validation data for this product please contact:

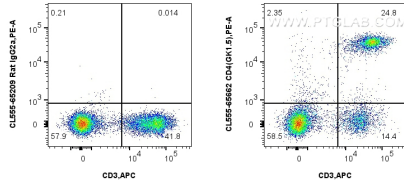
T: 4006900926

E: Proteintech-CN@ptglab.com

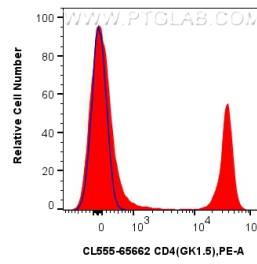
W: ptgcn.com

This product is exclusively available under Proteintech Group brand and is not available to purchase from any other manufacturer.

Selected Validation Data



1x10⁶ mouse splenocytes were surface stained with APC Anti-Mouse CD3, and 0.25 ug CoraLite® Plus 555 Anti-Mouse CD4 (GK1.5) Rat IgG2a RecAb (CL555-65662, Clone: GK1.5) or CoraLite® Plus 555 Rat IgG2a Isotype Control (2A3) (CL555-65209, Clone: 2A3). Cells were not fixed.



1x10⁶ mouse splenocytes were surface stained with 0.25 ug CoraLite® Plus 555 Anti-Mouse CD4 (GK1.5) Rat IgG2a RecAb (CL555-65662, Clone: GK1.5) (red) or CoraLite® Plus 555 Rat IgG2a Isotype Control (2A3) (CL555-65209, Clone: 2A3) (blue). Cells were not fixed.