

For Research Use Only

CoraLite® Plus 555 Anti-Human ALCAM (3A6)



Catalog Number: CL555-65223

Basic Information

Catalog Number:

CL555-65223

Size:

100 tests, 5 µl/test

Source:

Mouse

Isotype:

IgG1, kappa

GenBank Accession Number:

BC057809

GeneID (NCBI):

214

UNIPROT ID:

Q13740

Full Name:

activated leukocyte cell adhesion molecule

Calculated MW:

105 kDa

Purification Method:

Affinity purification

CloneNo.:

3A6

Excitation/Emission maxima wavelengths:

554 nm / 570 nm

Applications

Tested Applications:

FC

Species Specificity:

Human

Background Information

Activated leukocyte cell adhesion molecule (ALCAM, also known as CD166) is a cell adhesion molecule that belongs to the immunoglobulin superfamily. It is involved in cell-cell adhesion through homophilic and heterophilic (to CD6) interactions. ALCAM is widely expressed in a variety of normal tissues and cell types, including activated T cells and monocytes, epithelial cells, fibroblasts, neuronal cells, hepatocytes, and bone marrow mesenchymal stem cells (PMID: 7760007; 25221999). Altered ALCAM expression has been associated with the differentiation state and progression in some neoplasms including melanoma, prostate, colorectal, and breast cancers (PMID: 20461761; 18172759).

Storage

Storage:

Store at 2-8°C. Avoid exposure to light. Stable for one year after shipment.

Storage Buffer:

PBS with 0.09% sodium azide and 0.5% BSA.

For technical support and original validation data for this product please contact:

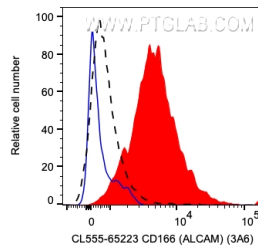
T: 4006900926

E: Proteintech-CN@ptglab.com

W: ptgcn.com

This product is exclusively available under Proteintech Group brand and is not available to purchase from any other manufacturer.

Selected Validation Data



1×10^6 PHA-treated (day 3) human PBMCs were surface stained with 5 μ l CoraLite® Plus 555 Anti-Human ALCAM (CL555-65223, Clone:3A6) (red), or unstained (blue). The black dashed line indicates unactivated PBMCs surface stained with 5 μ l CoraLite® Plus 555 Anti-Human ALCAM (CL555-65223, Clone:3A6). Cells were not fixed. Monocytes were gated.