

For Research Use Only

# CoraLite® Plus 555 Anti-Human CD1c (L161)

Catalog Number: CL555-65176



## Basic Information

Catalog Number:

CL555-65176

Concentration:

100 tests, 5 µl/test

Source:

Mouse

Isotype:

IgG1, kappa

GenBank Accession Number:

BC126465

GeneID (NCBI):

911

UNIPROT ID:

P29017

Full Name:

CD1c molecule

Purification Method:

Affinity purification

CloneNo.:

L161

Recommended Dilutions:

FC: 5 µl per 10<sup>6</sup> cells in 100 µl suspension

Excitation/Emission maxima wavelengths:

554 nm / 570 nm

## Applications

Tested Applications:

FC

Species Specificity:

human

Positive Controls:

FC : human PBMCs,

## Background Information

CD1c molecule (CD1c, also known as R7, CD1, CD1A, and BDCA1) is a member of the CD1 family of transmembrane glycoproteins, which is synthesized in the endoplasmic reticulum and expressed on the monocytes, marginal zone B cells in lymph nodes as well as peripheral blood (PMID: 23468110). The CD1 proteins belong to the family of major histocompatibility complex (MHC) class I-like proteins that present lipid-based antigens to T cells (PMID: 15032598; 23127489). CD1c shows interaction with both  $\alpha\beta$  or  $\gamma\delta$  T cells and mediates T cell responses against mycobacterium tuberculosis (PMID: 10727456; 10786796).

## Storage

Storage:

Store at 2-8°C. Avoid exposure to light. Stable for one year after shipment.

Storage Buffer:

PBS with 0.09% sodium azide and 0.5% BSA, pH7.3

For technical support and original validation data for this product please contact:

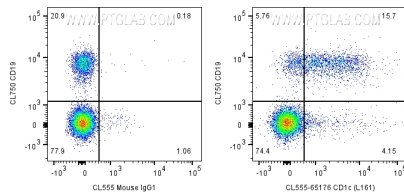
T: 4006900926

E: [Proteintech-CN@ptglab.com](mailto:Proteintech-CN@ptglab.com)

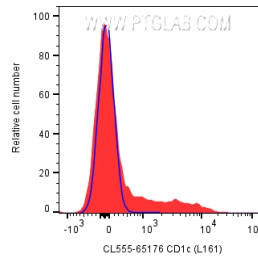
W: [ptgcn.com](http://ptgcn.com)

This product is exclusively available under Proteintech Group brand and is not available to purchase from any other manufacturer.

## Selected Validation Data



1x10<sup>6</sup> human PBMCs were surface stained with CoraLite® Plus 750 Anti-Human CD19 and 5 ul CoraLite® Plus 555 Anti-Human CD1c (L161) (CL555-65176) or CoraLite® 555 Mouse IgG1 Isotype Control. Cells were not fixed. Lymphocytes were gated.



1x10<sup>6</sup> human PBMCs were surface stained with 5 ul CoraLite® Plus 555 Anti-Human CD1c (L161) (CL555-65176) or CoraLite® 555 Mouse IgG1 Isotype Control. Cells were not fixed. Lymphocytes were gated.