

For Research Use Only

# CoraLite® Plus 555 Anti-Mouse CD25 (PC61.5)



Catalog Number: **CL555-65137**

## Basic Information

<b>Catalog Number:</b> CL555-65137	<b>GenBank Accession Number:</b> BC114437	<b>Purification Method:</b> Affinity purification
<b>Size:</b> 100ug, 0.5 mg/ml	<b>GeneID (NCBI):</b> 16184	<b>CloneNo.:</b> PC61.5
<b>Source:</b> Rat	<b>UNIPROT ID:</b> P01590	<b>Excitation/Emission maxima wavelengths:</b> 554 nm / 570 nm
<b>Isotype:</b> IgG1, lambda	<b>Full Name:</b> interleukin 2 receptor, alpha chain	

## Applications

**Tested Applications:**  
FC

**Species Specificity:**  
Mouse

## Background Information

Proliferation of T lymphocytes is triggered by the interaction of IL-2 with its specific receptor following T lymphocyte activation. The receptor for IL-2 has three forms, generated by different combinations of three different proteins, the alpha chain (IL-2R alpha), the beta chain (IL-2R beta), and the gamma chain (IL-2R gamma) (PMID: 8476561). IL-2R alpha (also known as CD25) is a type I transmembrane protein present on activated T cells, activated B cells, some thymocytes, myeloid precursors, and oligodendrocytes. CD25 is also found on natural CD4+Foxp3+ Treg cells (PMID: 22585674).

## Storage

**Storage:**  
Store at 2-8°C. Avoid exposure to light. Stable for one year after shipment.

**Storage Buffer:**  
PBS with 0.09% sodium azide.

For technical support and original validation data for this product please contact:

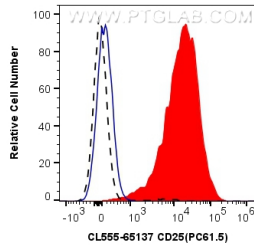
T: 4006900926

E: [Proteintech-CN@ptglab.com](mailto:Proteintech-CN@ptglab.com)

W: [ptgcn.com](http://ptgcn.com)

**This product is exclusively available under Proteintech Group brand and is not available to purchase from any other manufacturer.**

## Selected Validation Data



$1 \times 10^6$  plate-bound Anti-CD3 and Anti-CD28 stimulated (red) or unstimulated (black dashed) mouse splenocytes were surface stained with 0.5  $\mu$ g CoraLite® Plus 555 Anti-Mouse CD25 (CL555-65137, Clone: PC61.5), or 0.5  $\mu$ g Isotype Control (blue). Cells were not fixed.