

# CoraLite® Plus 555 Anti-Human CD3 (Hit3a)

Catalog Number: **CL555-65112**

## Basic Information

**Catalog Number:**

CL555-65112

**Size:**

100tests, 5 µl/test

**Source:**

Mouse

**Isotype:**

IgG2a, kappa

**GenBank Accession Number:**

BC049847

**GeneID (NCBI):**

916

**ENSEMBL Gene ID:**

ENSG00000198851

**UNIPROT ID:**

P07766

**Full Name:**

CD3e molecule, epsilon (CD3-TCR complex)

**Calculated MW:**

207 aa, 23 kDa

**Purification Method:**

Affinity purification

**CloneNo.:**

Hit3a

**Excitation/Emission maxima wavelengths:**

554 nm / 570 nm

## Applications

**Tested Applications:**

FC

**Species Specificity:**

Human

## Background Information

CD3 is a multimeric protein associated with the T-cell receptor (TCR) to form a complex involved in antigen recognition and signal transduction (PMID: 15885124). CD3 is composed of CD3  $\gamma$ ,  $\delta$ ,  $\epsilon$ , and  $\zeta$  chains (PMID: 1826255). It is expressed by thymocytes in a developmentally regulated manner, T cells, and some NK cells (PMID: 3289580). The TCR recognizes antigens bound to major histocompatibility complex (MHC) molecules. TCR-mediated peptide-MHC recognition is transmitted to the CD3 complex, leading to the intracellular signal transduction (PMID: 11985657).

## Storage

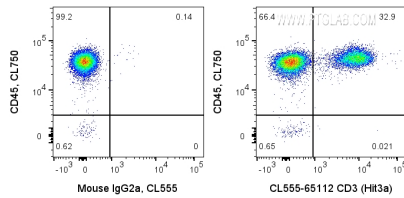
**Storage:**

Store at 2-8°C. Avoid exposure to light. Stable for one year after shipment.

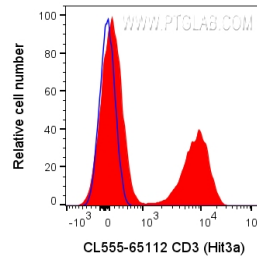
**Storage Buffer:**

PBS with 0.09% sodium azide and 0.5% BSA.

## Selected Validation Data



1X10<sup>6</sup> human PBMCs were surface stained with CL750 Anti-Human CD45 and 5 ul CoraLite® Plus 555 Anti-Human CD3 (CL555-65112, Clone:Hit3a), or Mouse IgG2a Isotype Control. Cells were not fixed. Lymphocytes were gated.



1X10<sup>6</sup> human PBMCs were surface stained with 5 ul CoraLite® Plus 555 Anti-Human CD3 (CL555-65112, Clone:Hit3a), or Mouse IgG2a Isotype Control. Cells were not fixed. Lymphocytes were gated.