

For Research Use Only

# CoraLite® Plus 555 Anti-Mouse CD80 (16-10A1)

Catalog Number:CL555-65076



## Basic Information

Catalog Number:

CL555-65076

Size:

100ug, 500 ug/ml

Source:

Armenian Hamster

Isotype:

IgG

GenBank Accession Number:

BC131959

GeneID (NCBI):

12519

UNIPROT ID:

Q00609

Full Name:

CD80 antigen

Purification Method:

Affinity purification

CloneNo.:

16-10A1

Excitation/Emission maxima wavelengths:

554 nm / 570 nm

## Applications

Tested Applications:

FC

Species Specificity:

mouse

## Background Information

CD80 (also known as B7-1) is a type I membrane protein that is a member of the immunoglobulin superfamily, with an extracellular immunoglobulin constant-like domain and a variable-like domain required for receptor binding. It is expressed on antigen-presenting cells (APCs), including B cells, dendritic cells, monocytes, and macrophages. CD80 is the receptor for the proteins CD28 and CTLA-4 found on the surface of T-cells. It is involved in the costimulatory signal essential for T-lymphocyte activation. T-cell proliferation and cytokine production is induced by the binding of CD28, binding to CTLA-4 has opposite effects and inhibits T-cell activation. CD80 also acts as a cellular attachment receptor for adenovirus subgroup B. (PMID: 7545666; 12015893; 16920215)

## Storage

Storage:

Store at 2-8°C. Avoid exposure to light. Stable for one year after shipment.

Storage Buffer:

PBS with 0.09% sodium azide.

For technical support and original validation data for this product please contact:

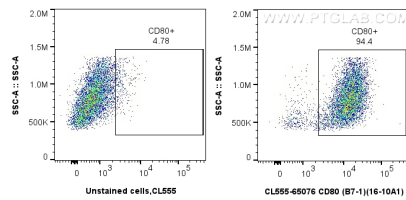
T: 4006900926

E: [Proteintech-CN@ptglab.com](mailto:Proteintech-CN@ptglab.com)

W: [ptgcn.com](http://ptgcn.com)

This product is exclusively available under Proteintech Group brand and is not available to purchase from any other manufacturer.

## Selected Validation Data



1X10<sup>6</sup> BALB/C mouse peritoneal macrophages were surface stained with 0.5 ug Coralite® Plus 555 Anti-Mouse CD80 (B7-1) (CL555-65076, Clone: 16-10A1), or unstained. Cells were not fixed.