

For Research Use Only

# CoraLite®555-conjugated Cytokeratin 20 Monoclonal antibody

Catalog Number:CL555-60183



## Basic Information

Catalog Number:

CL555-60183

Concentration:

1000 ug/ml

Source:

Mouse

Isotype:

IgG2b

Immunogen Catalog Number:

AG11336

GenBank Accession Number:

BC031559

GeneID (NCBI):

54474

UNIPROT ID:

P35900

Full Name:

keratin 20

Calculated MW:

424 aa, 48 kDa

Observed MW:

46 kDa

Purification Method:

Protein A purification

CloneNo.:

4D10A4

Recommended Dilutions:

IF-P 1:50-1:500

IF/ICC 1:50-1:500

Excitation/Emission maxima wavelengths:

557 nm / 570 nm

## Applications

Tested Applications:

IF/ICC, IF-P

Species Specificity:

human

Positive Controls:

IF-P : human colon tissue,

IF/ICC : HT-29 cells,

## Background Information

Keratins are a large family of proteins that form the intermediate filament cytoskeleton of epithelial cells. Keratin expression is highly regulated, tissue specific, and varies according to cell-state. Type I keratins consist of acidic, low molecular weight proteins with MW ranging from 40 kDa (KRT19) to 64 kDa (KRT9). Type 2 keratins consist of basic or neutral, high molecular weight proteins with MW from 52 kDa (KRT8) to 67 kDa (KRT18).Keratin 20 is a type I cytokeratin. It is a major cellular protein of mature enterocytes and goblet cells and is specifically found in the gastric and intestinal mucosa.

## Storage

Storage:

Store at -20°C. Avoid exposure to light. Stable for one year after shipment.

Storage Buffer:

PBS with 50% Glycerol, 0.05% Proclin300, 0.5% BSA, pH 7.3.

Aliquoting is unnecessary for -20°C storage

For technical support and original validation data for this product please contact:

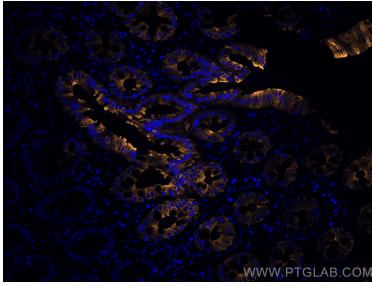
T: 4006900926

E: [Proteintech-CN@ptglab.com](mailto:Proteintech-CN@ptglab.com)

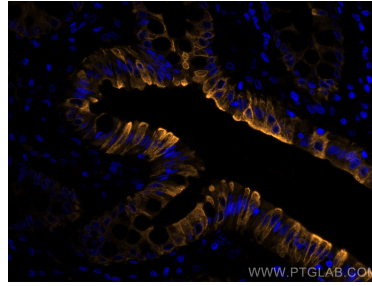
W: [ptgcn.com](http://ptgcn.com)

This product is exclusively available under Proteintech Group brand and is not available to purchase from any other manufacturer.

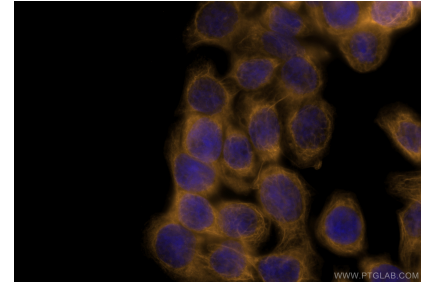
## Selected Validation Data



Immunofluorescent analysis of (4% PFA) fixed human colon tissue using CoraLite®555 Cytokeratin 20 antibody (CL555-60183, Clone: 4D10A4 ) at dilution of 1:200.



Immunofluorescent analysis of (4% PFA) fixed human colon tissue using CoraLite®555 Cytokeratin 20 antibody (CL555-60183, Clone: 4D10A4 ) at dilution of 1:200.



Immunofluorescent analysis of (-20°C Ethanol) fixed HT-29 cells using CoraLite®555 Cytokeratin 20 antibody (CL555-60183, Clone: 4D10A4 ) at dilution of 1:200.