

# CoraLite®555-conjugated Chromogranin A Monoclonal antibody

Catalog Number: **CL555-60135**

## Basic Information

<b>Catalog Number:</b> CL555-60135	<b>GenBank Accession Number:</b> BC006459	<b>Purification Method:</b> Protein G purification
<b>Size:</b> 1000 µg/ml	<b>GeneID (NCBI):</b> 1113	<b>CloneNo.:</b> 3H11C11
<b>Source:</b> Mouse	<b>UNIPROT ID:</b> P10645	<b>Recommended Dilutions:</b> IF/ICC 1:50-1:500
<b>Isotype:</b> IgG1	<b>Full Name:</b> chromogranin A (parathyroid secretory protein 1)	<b>Excitation/Emission maxima wavelengths:</b> 557 nm / 570 nm
<b>Immunogen Catalog Number:</b> AG0807	<b>Calculated MW:</b> 51 kDa	

## Applications

<b>Tested Applications:</b> IF/ICC, FC (Intra)	<b>Positive Controls:</b> IF/ICC : PC-12 cells, SH-SY5Y cells, Neuro-2a cells
<b>Species Specificity:</b> human, mouse, rat, pig	

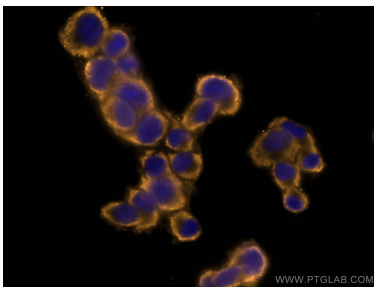
## Background Information

Chromogranin A is a member of the granin family of neuroendocrine secretory proteins. It is located in secretory vesicles of neurons and endocrine cells. Chromogranin A is the precursor to several functional peptides including vasostatin, pancreastatin, catestatin and parastatin. These peptides negatively modulate the neuroendocrine function of the releasing cell (autocrine) or nearby cells (paracrine). CgA is one of the most used tumor markers in NET's (neuroendocrine tumors), and elevated CgA concentrations have been demonstrated in serum or plasma of patients with different types of these tumors.

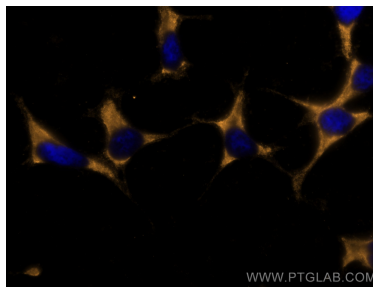
## Storage

**Storage:**  
Store at -20°C. Avoid exposure to light. Stable for one year after shipment.  
**Storage Buffer:**  
PBS with 50% Glycerol, 0.05% Proclin300, 0.5% BSA, pH 7.3.  
Aliquoting is unnecessary for -20°C storage

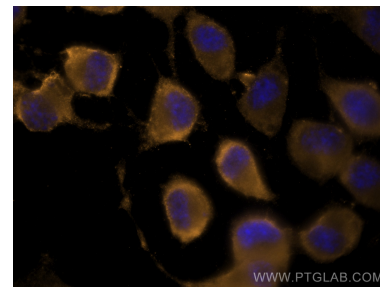
## Selected Validation Data



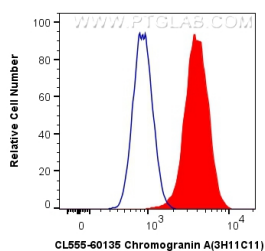
Immunofluorescent analysis of (-20°C Ethanol) fixed PC-12 cells using CoraLite®555 Chromogranin A antibody (CL555-60135, Clone: 3H11C11) at dilution of 1:200.



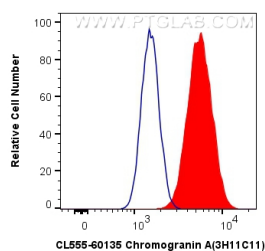
Immunofluorescent analysis of (-20°C Ethanol) fixed SH-SY5Y cells using CoraLite®555 Chromogranin A antibody (CL555-60135, Clone: 3H11C11) at dilution of 1:200.



Immunofluorescent analysis of (4% PFA) fixed Neuro-2a cells using CoraLite®555 Chromogranin A antibody (CL555-60135, Clone: 3H11C11) at dilution of 1:200.



1X10<sup>6</sup> SH-SY5Y cells were intracellularly stained with 0.8 ug CoraLite®555 Anti-Human Chromogranin A (CL555-60135, Clone:3H11C11) (red), or 0.8 ug Control Antibody. Cells were fixed with 4% PFA and permeabilized with Flow Cytometry Perm Buffer (PF00011-C).



1X10<sup>6</sup> Neuro-2a cells were intracellularly stained with 0.8 ug CoraLite®555 Anti-Human Chromogranin A (CL555-60135, Clone:3H11C11) (red), or 0.8 ug Control Antibody. Cells were fixed with 4% PFA and permeabilized with Flow Cytometry Perm Buffer (PF00011-C).