

For Research Use Only

CoraLite®555-conjugated Rabbit IgG control Polyclonal antibody

Catalog Number: CL555-30000



Basic Information

Catalog Number:

CL555-30000

GenBank Accession Number:

GeneID (NCBI):

Full Name:

Purification Method:

N/A

Size:

1000 ug/ml

Source:

Rabbit

Isotype:

IgG

Excitation/Emission maxima wavelengths:

557 nm / 570 nm

Applications

Tested Applications:

FC, FC (Intra)

Species Specificity:

n/a

Background Information

This product is Normal rabbit IgG (without immunized) which purified with Protein A. Normal Rabbit IgG is an isotype control antibody, which is used to estimate the non-specific binding of target primary antibodies due to Fc receptor binding or other protein-protein interactions. An isotype control antibody should have the same immunoglobulin type and be used at the same concentration as the test antibody.

Storage

Storage:

Store at -20°C. Avoid exposure to light. Stable for one year after shipment.

Storage Buffer:

PBS with 50% Glycerol, 0.05% Proclin300, 0.5% BSA, pH 7.3.

Aliquoting is unnecessary for -20°C storage

For technical support and original validation data for this product please contact:

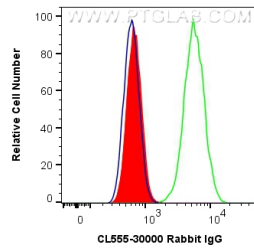
T: 4006900926

E: Proteintech-CN@ptglab.com

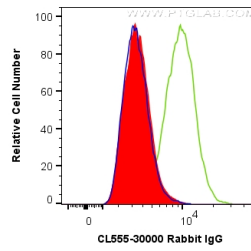
W: ptgcn.com

This product is exclusively available under Proteintech Group brand and is not available to purchase from any other manufacturer.

Selected Validation Data



1X10⁶ MCF-7 cells were surface stained with 0.4 ug CoraLite®555 Anti-Rabbit IgG control (CL555-30000), or 0.4 ug CoraLite®555-conjugated EPCAM Rabbit PolyAb (CL555-21050), or unstained (blue). Cells were not fixed.



1X10⁶ NIH/3T3 cells were intracellularly stained with 0.2 ug CoraLite®555 Anti-Rabbit IgG control (CL555-30000) (red), control used were unstained NIH/3T3 cells (Blue). Positive control is CoraLite®555 Calreticulin (CL555-27298) (Green). Cells were fixed with permeabilized with Transcription Factor Staining Buffer Kit (PF00011). and permeabilized Flow Perm Buffer (PF00011).