

# CoraLite®555-conjugated IRE1; ERN1 Polyclonal antibody

Catalog Number: **CL555-27528**

## Basic Information

**Catalog Number:**

CL555-27528

**Size:**

1000 µg/ml

**Source:**

Rabbit

**Isotype:**

IgG

**Immunogen Catalog Number:**

AG25580

**GenBank Accession Number:**

BC130405

**GeneID (NCBI):**

2081

**UNIPROT ID:**

O75460

**Full Name:**

endoplasmic reticulum to nucleus  
signaling 1

**Calculated MW:**

977 aa, 110 kDa

**Observed MW:**

130 kDa

**Purification Method:**

Antigen affinity purification

**Excitation/Emission maxima  
wavelengths:**

557 nm / 570 nm

## Applications

**Tested Applications:**

FC (Intra)

**Species Specificity:**

human

## Background Information

Inositol-requiring enzyme 1 (IRE1) is an ER transmembrane sensor that activates the UPR to maintain the ER and cellular function. Although mammalian IRE1 promotes cell survival, it can initiate apoptosis via decay of antiapoptotic miRNAs. IRE1 contains a ribonuclease domain in its cytoplasmic region which initiates splicing reaction by direct cleavage of XBP1 mRNA at the two stem loop structures. IRE1 plays instrumental protumoral roles in several cancers, and high IRE1 activity has been associated with poorer prognoses. (PMID: 23880584, PMID: 32861679, PMID: 31875595)

## Storage

**Storage:**

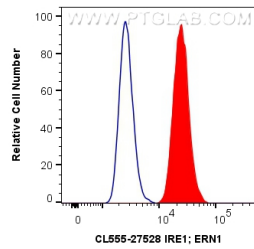
Store at -20°C. Avoid exposure to light. Stable for one year after shipment.

**Storage Buffer:**

PBS with 50% Glycerol, 0.05% Proclin300, 0.5% BSA, pH 7.3.

Aliquoting is unnecessary for -20°C storage

## Selected Validation Data



1X10<sup>6</sup> A549 cells were intracellularly stained with 0.4 ug CoraLite®555 Anti-Human IRE1; ERN1 (CL555-27528) (red), or 0.4 ug CoraLite®555-conjugated Rabbit IgG control Rabbit PolyAb (CL555-30000, Clone: ) (blue). Cells were fixed with 4% PFA and permeabilized with Flow Cytometry Perm Buffer (PF00011-C).