

For Research Use Only

# CoraLite®555-conjugated Ki67 Polyclonal antibody



Catalog Number: CL555-27309

Featured Product

## Basic Information

Catalog Number:

CL555-27309

Size:

1000 µg/ml

Source:

Rabbit

Isotype:

IgG

Immunogen Catalog Number:

AG26266

GenBank Accession Number:

NM\_002417

GeneID (NCBI):

4288

Full Name:

antigen identified by monoclonal  
antibody Ki-67

Calculated MW:

359 kDa

Purification Method:

Antigen affinity purification

Recommended Dilutions:

IF 1:50-1:500

Excitation/Emission maxima  
wavelengths:

557 nm / 570nm

## Applications

Tested Applications:

FC (Intra), IF/ICC

Species Specificity:

human

Positive Controls:

IF : HeLa cells,

## Background Information

The Ki-67 protein (also known as MKI67) is a cellular marker for proliferation. Ki67 is present during all active phases of the cell cycle (G1, S, G2 and M), but is absent in resting cells (G0). Cellular content of Ki-67 protein markedly increases during cell progression through S phase of the cell cycle. Therefore, the nuclear expression of Ki67 can be evaluated to assess tumor proliferation by immunohistochemistry. It has been demonstrated to be of prognostic value in breast cancer. In head and neck cancer, several studies have reported an association between high proliferative activity and poorer prognosis.

## Storage

Storage:

Store at -20°C. Avoid exposure to light.

Storage Buffer:

PBS with 50% Glycerol, 0.05% Proclin300, 0.5% BSA, pH 7.3.

Aliquoting is unnecessary for -20°C storage

For technical support and original validation data for this product please contact:

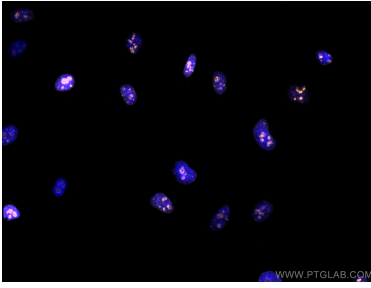
T: 4006900926

E: Proteintech-CN@ptglab.com

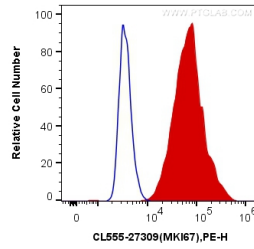
W: ptgcn.com

This product is exclusively available under Proteintech Group brand and is not available to purchase from any other manufacturer.

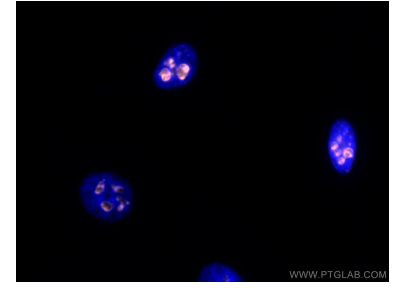
## Selected Validation Data



Immunofluorescent analysis of (4% PFA) fixed HeLa cells using CoraLite@555 KI67 antibody (CL555-27309) at dilution of 1:200.



$1 \times 10^6$  Jurkat cells were intracellularly stained with 0.4  $\mu$ g CoraLite@555 Anti-Human KI67 (CL555-27309) (red), or 0.4  $\mu$ g Control Antibody. Cells were fixed and permeabilized with Transcription Factor Staining Buffer Kit (PF00011).



Immunofluorescent analysis of (4% PFA) fixed HeLa cells using CoraLite@555 KI67 antibody (CL555-27309) at dilution of 1:200.