

CoraLite®555-conjugated pan-keratin Polyclonal antibody

Catalog Number: **CL555-26411**

Basic Information

Catalog Number:

CL555-26411

Size:

1000 µg/ml

Source:

Rabbit

Isotype:

IgG

Immunogen Catalog Number:

AG24184

GenBank Accession Number:

BC024292

GeneID (NCBI):

3852

UNIPROT ID:

P13647

Full Name:

keratin 5

Calculated MW:

590 aa, 62 kDa

Purification Method:

Antigen affinity purification

Recommended Dilutions:

IF-P 1:50-1:500

IF/ICC 1:50-1:500

Excitation/Emission maxima wavelengths:

557 nm / 570 nm

Applications

Tested Applications:

IF/ICC, IF-P

Species Specificity:

human

Positive Controls:

IF-P : human colon cancer tissue, human breast cancer tissue, human lung cancer tissue

IF/ICC : A431 cells,

Background Information

Keratins are a large family of proteins that form the intermediate filament cytoskeleton of epithelial cells, which are classified into two major sequence types. Type I keratins are a group of acidic intermediate filament proteins, including K9-K23, and the hair keratins Ha1-Ha8. Type II keratins are the basic or neutral counterparts to the acidic type I keratins, including K1-K8, and the hair keratins, Hb1-Hb6. Keratin isoforms demonstrate tissue- and differentiation-specific profiles that make them useful as research biomarkers. Research studies have shown that mutations in keratin genes are associated with skin disorders, liver and pancreatic diseases, and inflammatory intestinal diseases. This antibody is a pan-keratin antibody.

Storage

Storage:

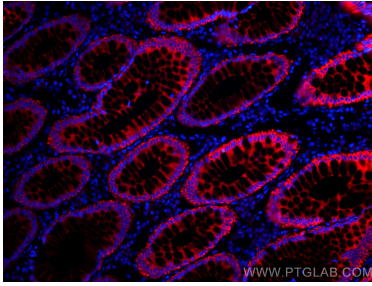
Store at -20°C. Avoid exposure to light. Stable for one year after shipment.

Storage Buffer:

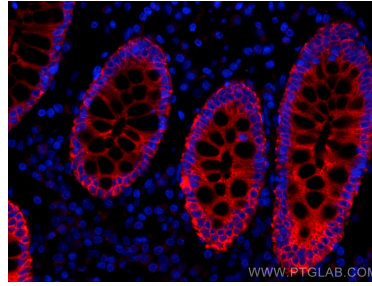
PBS with 50% Glycerol, 0.05% Proclin300, 0.5% BSA, pH 7.3.

Aliquoting is unnecessary for -20°C storage

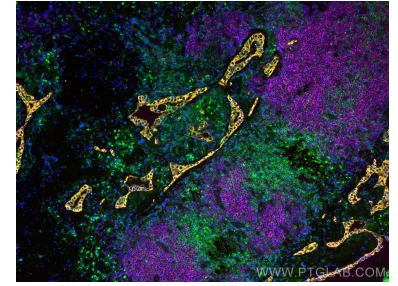
Selected Validation Data



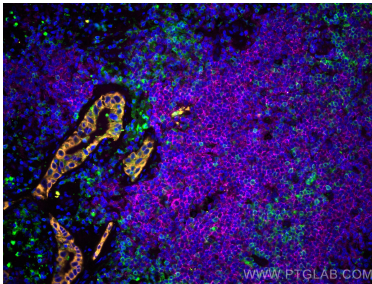
Immunofluorescent analysis of (4% PFA) fixed human colon cancer tissue using CoraLite®555 pan-keratin antibody (CL555-26411) at dilution of 1:200.



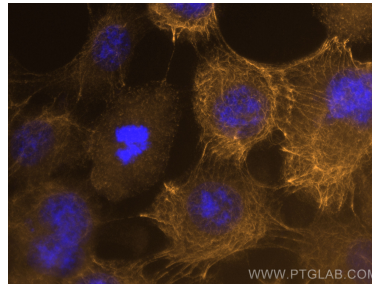
Immunofluorescent analysis of (4% PFA) fixed human colon cancer tissue using CoraLite®555 pan-keratin antibody (CL555-26411) at dilution of 1:200.



Immunofluorescent analysis of (4% PFA) fixed human lung cancer tissue using CoraLite®555 pan-keratin antibody (CL555-26411) at dilution of 1:200, CoraLite® Plus 488 CD3 antibody (CL488-60181, Clone: 3F3A1, green), CoraLite® Plus 647 CD20 antibody (CL647-60271, Clone: 4A7G3, Magenta).



Immunofluorescent analysis of (4% PFA) fixed human lung cancer tissue using CoraLite®555 pan-keratin antibody (CL555-26411) at dilution of 1:200, CoraLite® Plus 488 CD3 antibody (CL488-60181, Clone: 3F3A1, green), CoraLite® Plus 647 CD20 antibody (CL647-60271, Clone: 4A7G3, Magenta).



Immunofluorescent analysis of (-20°C Methanol) fixed A431 cells using CoraLite®555 pan-keratin antibody (CL555-26411) at dilution of 1:200.