

For Research Use Only

# CoraLite®555-conjugated FER Polyclonal antibody

Catalog Number:CL555-25287



## Basic Information

Catalog Number:

CL555-25287

Source:

Rabbit

Isotype:

IgG

Immunogen Catalog Number:

AG18173

GenBank Accession Number:

BC017060

GeneID (NCBI):

2241

UNIPROT ID:

P16591

Full Name:

fer (fps/fes related) tyrosine kinase

Calculated MW:

822 aa, 95 kDa

Observed MW:

95 kDa

Purification Method:

Antigen affinity purification

Recommended Dilutions:

FC (Intra): 0.40 ug per 10<sup>6</sup> cells in a  
100 µl suspension

Excitation/Emission maxima  
wavelengths:

557 nm / 570 nm

## Applications

Tested Applications:

FC (Intra)

Species Specificity:

human, mouse

Positive Controls:

FC (Intra) : Jurkat cells,

## Background Information

FER(Tyrosine-protein kinase Fer) is also named as TYK3 and belongs to the protein kinase superfamily. Tyrosine-protein kinase acts downstream of cell surface receptors for growth factors and plays a role in the regulation of the actin cytoskeleton, microtubule assembly, lamellipodia formation, cell adhesion, cell migration and chemotaxis. This protein has 3 isoforms produced by alternative promoter usage and alternative splicing.

## Storage

Storage:

Store at -20°C. Avoid exposure to light. Stable for one year after shipment.

Storage Buffer:

PBS with 50% glycerol, 0.05% Proclin300, 0.5% BSA, pH7.3

Aliquoting is unnecessary for -20°C storage

For technical support and original validation data for this product please contact:

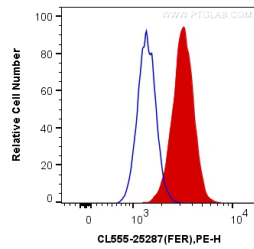
T: 4006900926

E: [Proteintech-CN@ptglab.com](mailto:Proteintech-CN@ptglab.com)

W: [ptgcn.com](http://ptgcn.com)

This product is exclusively available under Proteintech Group brand and is not available to purchase from any other manufacturer.

## Selected Validation Data



1X10<sup>6</sup> Jurkat cells were intracellularly stained with 0.4 ug CoraLite® 555 Anti-Human FER (CL555-25287) (red), or 0.4 ug Control Antibody. Cells were fixed with 4% PFA and permeabilized with Flow Cytometry Perm Buffer.