

For Research Use Only

# CoraLite®555-conjugated PCM1 Polyclonal antibody



Catalog Number: CL555-19856

Featured Product

## Basic Information

Catalog Number:

CL555-19856

Size:

1000 µg/ml

Source:

Rabbit

Isotype:

IgG

Immunogen Catalog Number:

AG13929

GenBank Accession Number:

BC000453

GeneID (NCBI):

5108

UNIPROT ID:

Q15154

Full Name:

pericentriolar material 1

Calculated MW:

2024 aa, 228 kDa

Observed MW:

260-280 kDa

Purification Method:

Antigen affinity purification

Recommended Dilutions:

IF 1:200-1:800

Excitation/Emission maxima  
wavelengths:

557 nm / 570nm

## Applications

Tested Applications:

FC (Intra), IF/ICC

Species Specificity:

human, mouse

Positive Controls:

IF : HeLa cells,

## Background Information

Pericentriolar material 1 (PCM1) is a component of centriolar satellites, which are electron dense granules scattered around centrosomes (PMID: 10579718). PCM1 is required for centrosome assembly and function. It acts as a scaffold to target several proteins to the centrosome in a dynein motor-dependent manner and regulate microtubular dynamics (PMID:18762586; 12403812). It is also involved in the biogenesis of cilia (PMID: 18772192). Chromosomal aberrations involving PCM1 gene are associated with papillary thyroid carcinomas and a variety of hematological malignancies, including atypical chronic myeloid leukemia and T-cell lymphoma. (PMID: 10980597; 16091753; 15805263; 16424865).

## Storage

Storage:

Store at -20°C. Avoid exposure to light. Stable for one year after shipment.

Storage Buffer:

PBS with 50% Glycerol, 0.05% Proclin300, 0.5% BSA, pH 7.3.

Aliquoting is unnecessary for -20°C storage

For technical support and original validation data for this product please contact:

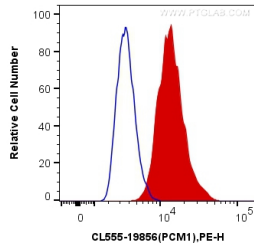
T: 4006900926

E: Proteintech-CN@ptglab.com

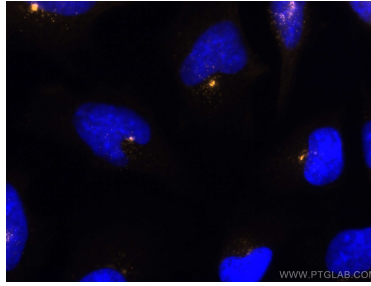
W: ptgcn.com

This product is exclusively available under Proteintech Group brand and is not available to purchase from any other manufacturer.

## Selected Validation Data



$1 \times 10^6$  HepG2 cells were intracellularly stained with 0.4  $\mu$ g CoraLite®555 Anti-Human PCM1 (CL555-19856) (red), or 0.4  $\mu$ g Control Antibody. Cells were fixed with 4% PFA and permeabilized with Flow Cytometry Perm Buffer (PF00011-C).



Immunofluorescent analysis of (-20°C Ethanol) fixed HeLa cells using CoraLite®555 PCM1 antibody (CL555-19856) at dilution of 1:400.