

For Research Use Only

CoraLite®555-conjugated BCL10 Polyclonal antibody



Catalog Number:CL555-17732

Featured Product

Basic Information

Catalog Number:

CL555-17732

Size:

1000 µg/ml

Source:

Rabbit

Isotype:

IgG

Immunogen Catalog Number:

AG12170

GenBank Accession Number:

BC053617

GeneID (NCBI):

8915

UNIPROT ID:

O95999

Full Name:

B-cell CLL/lymphoma 10

Calculated MW:

233 aa, 26 kDa

Observed MW:

30 kDa

Purification Method:

Antigen affinity purification

Recommended Dilutions:

IF/ICC 1:50-1:500

Excitation/Emission maxima wavelengths:

557 nm / 570nm

Applications

Tested Applications:

IF/ICC

Species Specificity:

human, mouse, rat

Positive Controls:

IF/ICC : A549 cells,

Background Information

The gene encoding BCL10 was identified by its recurrent translocation t(1;14)(p22;q32) in a case of mucosa-associated lymphoid tissue (MALT) lymphoma. BCL10 contains a caspase recruitment domain (CARD), and has been shown to induce apoptosis and to activate NF-kappaB.

Storage

Storage:

Store at -20°C. Avoid exposure to light.

Storage Buffer:

PBS with 50% Glycerol, 0.05% Proclin300, 0.5% BSA, pH 7.3.

Aliquoting is unnecessary for -20°C storage

For technical support and original validation data for this product please contact:

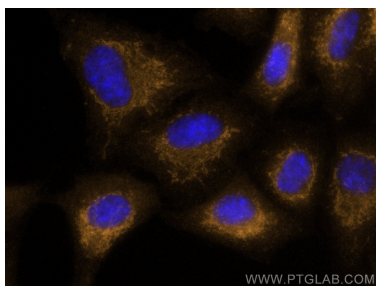
T: 4006900926

E: Proteintech-CN@ptglab.com

W: ptgcn.com

This product is exclusively available under Proteintech Group brand and is not available to purchase from any other manufacturer.

Selected Validation Data



Immunofluorescent analysis of (4% PFA) fixed A549 cells using CoraLite®555 BCL10 antibody (CL555-17732) at dilution of 1:200.