

For Research Use Only



# CoraLite®555-conjugated Cytokeratin 17-Specific Polyclonal antibody

Catalog Number: **CL555-17516**

Featured Product

## Basic Information

Catalog Number:  
CL555-17516

Size:  
1000 µg/ml

Source:  
Rabbit

Isotype:  
IgG

GenBank Accession Number:  
NM\_000422

GeneID (NCBI):  
3872

UNIPROT ID:  
Q04695

Full Name:  
keratin 17

Calculated MW:  
48 kDa

Purification Method:  
Antigen affinity purification

Recommended Dilutions:  
IF 1:50-1:500

Excitation/Emission maxima  
wavelengths:  
557 nm / 570nm

## Applications

Tested Applications:  
FC (Intra), IF/ICC

Species Specificity:  
human, mouse

Positive Controls:

IF : HeLa cells,

## Background Information

Keratins are a large family of proteins that form the intermediate filament cytoskeleton of epithelial cells, which are classified into two major sequence types. Type I keratins are a group of acidic intermediate filament proteins, including K9-K23, and the hair keratins Ha1-Ha8. Type II keratins are the basic or neutral counterparts to the acidic type I keratins, including K1-K8, and the hair keratins, Hb1-Hb6. Keratin 17 is a type I cytokeratin. It is found in nail beds, hair follicles, sebaceous glands, and other epidermal appendages. It is used as a marker for trauma. This antibody is specifically against KRT17.

## Storage

Storage:

Store at -20°C. Avoid exposure to light.

Storage Buffer:

PBS with 50% Glycerol, 0.05% Proclin300, 0.5% BSA, pH 7.3.

Aliquoting is unnecessary for -20°C storage

For technical support and original validation data for this product please contact:

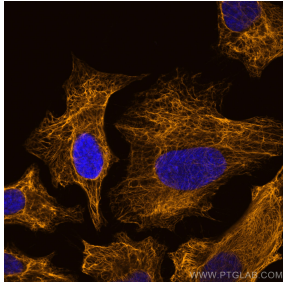
T: 4006900926

E: [Proteintech-CN@ptglab.com](mailto:Proteintech-CN@ptglab.com)

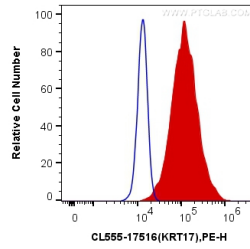
W: [ptgcn.com](http://ptgcn.com)

This product is exclusively available under Proteintech Group brand and is not available to purchase from any other manufacturer.

## Selected Validation Data



Immunofluorescent analysis of (-20°C Methanol) fixed HeLa cells using CoraLite®555 Cytokeratin 17-Specific antibody (CL555-17516) at dilution of 1:200.



1X10<sup>6</sup> HeLa cells were intracellularly stained with 0.4 ug CoraLite®555 Anti-Human Cytokeratin 17-Specific (CL555-17516) (red), or 0.4 ug Control Antibody. Cells were fixed with 4% PFA and permeabilized with Flow Cytometry Perm Buffer (PF00011-C).