

CoraLite®555-conjugated Cytokeratin 7 Polyclonal antibody

Catalog Number: **CL555-15539**

Basic Information

Catalog Number:

CL555-15539

Size:

1000 µg/ml

Source:

Rabbit

Isotype:

IgG

Immunogen Catalog Number:

AG7895

GenBank Accession Number:

BC002700

GeneID (NCBI):

3855

UNIPROT ID:

P08729

Full Name:

keratin 7

Calculated MW:

469 aa, 51 kDa

Observed MW:

51 kDa

Purification Method:

Antigen affinity purification

Recommended Dilutions:

IF-P 1:200-1:800

IF/ICC 1:50-1:500

Excitation/Emission maxima wavelengths:

557 nm / 570 nm

Applications

Tested Applications:

IF/ICC, IF-P, FC (Intra)

Species Specificity:

human, mouse, rat

Positive Controls:

IF-P : human breast cancer tissue,

IF/ICC : HeLa cells, HepG2 cells

Background Information

Keratins are a large family of proteins that form the intermediate filament cytoskeleton of epithelial cells, which are classified into two major sequence types. Type I keratins are a group of acidic intermediate filament proteins, including K9-K23, and the hair keratins Ha1-Ha8. Type II keratins are the basic or neutral counterparts to the acidic type I keratins, including K1-K8, and the hair keratins, Hb1-Hb6. KRT7 is a type II keratin. It is specifically expressed in the simple epithelia lining the cavities of the internal organs and in the gland ducts and blood vessels.

Storage

Storage:

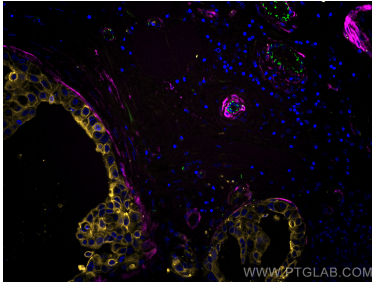
Store at -20°C. Avoid exposure to light. Stable for one year after shipment.

Storage Buffer:

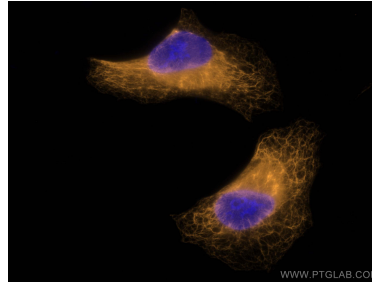
PBS with 50% Glycerol, 0.05% Proclin300, 0.5% BSA, pH 7.3.

Aliquoting is unnecessary for -20°C storage

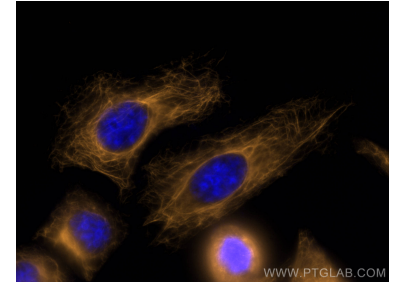
Selected Validation Data



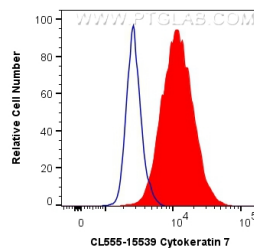
Immunofluorescent analysis of (4% PFA) fixed human breast cancer tissue using CoraLite®555 Cytokeratin 7 antibody (CL555-15539) at dilution of 1:800, CoraLite® Plus 647 smooth muscle actin specific antibody (CL647-67735, Clone: 1E9A11, Magenta), CoraLite®488 CD31 antibody (CL488-11265, green).



Immunofluorescent analysis of (-20°C Ethanol) fixed HeLa cells using CoraLite®555 Cytokeratin 7 antibody (CL555-15539) at dilution of 1:200.



Immunofluorescent analysis of (-20°C Ethanol) fixed HepG2 cells using CoraLite®555 Cytokeratin 7 antibody (CL555-15539) at dilution of 1:200.



1x10⁶ HeLa cells were intracellularly stained with 0.8 ug CoraLite®555-conjugated Cytokeratin 7 Polyclonal antibody (CL555-15539)(red), or 0.8 ug Control Antibody (blue). Cells were fixed with 4% PFA and permeabilized with Flow Cytometry Perm Buffer (PF00011-C).