

# CoraLite®555-conjugated Beta-2-Microglobulin Polyclonal antibody

Catalog Number: **CL555-13511**

## Basic Information

### Catalog Number:

CL555-13511

### Size:

1000 µg/ml

### Source:

Rabbit

### Isotype:

IgG

### Immunogen Catalog Number:

AG4433

### GenBank Accession Number:

BC032589

### GeneID (NCBI):

567

### ENSEMBL Gene ID:

ENSG00000166710

### UNIPROT ID:

P61769

### Full Name:

beta-2-microglobulin

### Calculated MW:

119 aa, 14 kDa

### Observed MW:

12-14 kDa

### Purification Method:

Antigen affinity purification

### Recommended Dilutions:

IF/ICC 1:50-1:500

### Excitation/Emission maxima wavelengths:

557 nm / 570 nm

## Applications

### Tested Applications:

IF/ICC

### Species Specificity:

human, mouse, rat

### Positive Controls:

IF/ICC : A431 cells,

## Background Information

Beta-2-microglobulin (B2M) is a component of MHC class I molecules, which are present on the surface of nearly all nucleated cells. It can be found in body fluids under physiologic conditions as a result of shedding from cell surfaces or intracellular release. B2M has various biological functions, including antigen presentation. Investigations reveal that increased synthesis and release of B2M are present in several malignant diseases.

## Storage

### Storage:

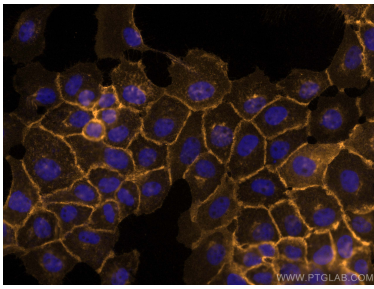
Store at -20°C. Avoid exposure to light. Stable for one year after shipment.

### Storage Buffer:

PBS with 50% Glycerol, 0.05% Proclin300, 0.5% BSA, pH 7.3.

Aliquoting is unnecessary for -20°C storage

## Selected Validation Data



Immunofluorescent analysis of (4% PFA) fixed A431 cells using CoraLite®555 Beta-2-Microglobulin antibody (CL555-13511) at dilution of 1:200.