

For Research Use Only

CoraLite®555-conjugated Hemoglobin Epsilon Polyclonal antibody

Catalog Number:CL555-12361



Basic Information

Catalog Number:

CL555-12361

Concentration:

1000 ug/ml

Source:

Rabbit

Isotype:

IgG

Immunogen Catalog Number:

AG3026

GenBank Accession Number:

BC015537

GeneID (NCBI):

3046

UNIPROT ID:

P02100

Full Name:

hemoglobin, epsilon 1

Calculated MW:

147 aa, 16 kDa

Observed MW:

12-16 kDa

Purification Method:

Antigen affinity purification

Recommended Dilutions:

IF-P 1:50-1:500

Excitation/Emission maxima wavelengths:

557 nm / 570 nm

Applications

Tested Applications:

IF-P, FC (Intra)

Species Specificity:

human, mouse, rat

Positive Controls:

IF-P : human placenta tissue,

Background Information

The hemoglobin molecule is a tetramer consisting of two alpha- and two beta-globin-like chains. HBE1 (hemoglobin epsilon chain) is a beta-type chain of hemoglobin predominantly expressed during the embryonic stage (21321359). The HBE1 has been regarded as the best marker for fetal nucleated red blood cells (NRBCs). This antibody can be used to label and isolate fetal cells from maternal blood and may be useful in prenatal diagnosis (15906407).

Storage

Storage:

Store at -20°C. Avoid exposure to light. Stable for one year after shipment.

Storage Buffer:

PBS with 50% glycerol, 0.05% Proclin300, 0.5% BSA, pH7.3

Aliquoting is unnecessary for -20°C storage

For technical support and original validation data for this product please contact:

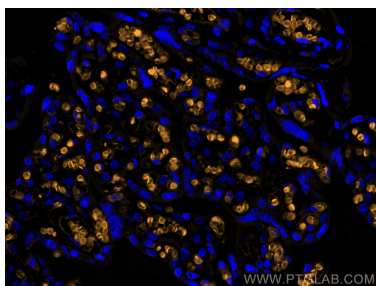
T: 4006900926

E: Proteintech-CN@ptglab.com

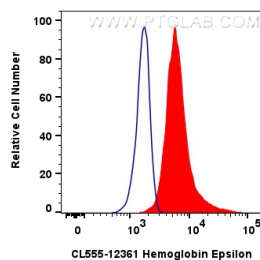
W: ptgcn.com

This product is exclusively available under Proteintech Group brand and is not available to purchase from any other manufacturer.

Selected Validation Data



Immunofluorescent analysis of (4% PFA) fixed paraffin-embedded human placenta tissue using CoraLite®555 Hemoglobin Epsilon antibody (CL555-12361) at dilution of 1:200. Heat mediated antigen retrieval with Tris-EDTA buffer (pH 9.0).



1x10⁶ K-562 cells were intracellularly stained with 0.8 ug CoraLite®555-conjugated Hemoglobin Epsilon Polyclonal antibody (CL555-12361)(red), or 0.8 ug CoraLite®555-conjugated Rabbit IgG control Rabbit PolyAb (CL555-30000) (blue). Cells were fixed with 4% PFA and permeabilized with Flow Cytometry Perm Buffer (PF00011-C).