

# CoraLite®532-conjugated CD107a / LAMP1 Monoclonal antibody

Catalog Number: CL532-67300

## Basic Information

|   |  |   |
|---|--|---|
| <b>Catalog Number:</b><br>CL532-67300       | <b>GenBank Accession Number:</b><br>BC021288                 | <b>Purification Method:</b><br>Protein A purification             |
| <b>Size:</b><br>1000 µg/ml                  | <b>GeneID (NCBI):</b><br>3916                                | <b>CloneNo.:</b><br>3B2E9   |
| <b>Source:</b><br>Mouse                     | <b>ENSEMBL Gene ID:</b><br>ENSG00000185896                   | <b>Recommended Dilutions:</b><br>IF-P 1:50-1:500                  |
| <b>Isotype:</b><br>IgG2b                    | <b>UNIPROT ID:</b><br>P11279                                 | <b>Excitation/Emission maxima wavelengths:</b><br>537 nm / 560 nm |
| <b>Immunogen Catalog Number:</b><br>AG28869 | <b>Full Name:</b><br>lysosomal-associated membrane protein 1 |   |
|   | <b>Calculated MW:</b><br>45 kDa                              |   |
|   | <b>Observed MW:</b><br>90-120 kDa                            |   |

## Applications

|                                      |   |
|--------------------------------------|---|
| <b>Tested Applications:</b><br>IF-P  | <b>Positive Controls:</b><br>IF-P : mouse liver tissue, |
| <b>Species Specificity:</b><br>human |   |

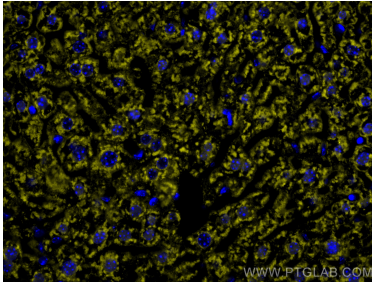
## Background Information

LAMP1 (also known as CD107a) is a 90-120 kDa heavily glycosylated membrane protein enriched in the lysosomal membrane. LAMP1 functions to provide selectins with carbohydrate ligands. This protein has also been shown to be a marker of degranulation on lymphocytes such as CD8+ and NK cells and may also play a role in tumor cell differentiation and metastasis.

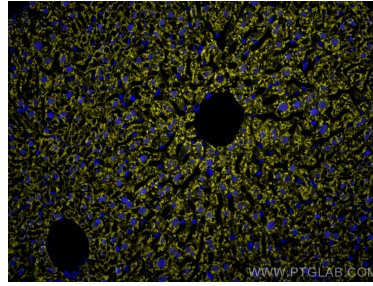
## Storage

**Storage:**  
Store at -20°C. Avoid exposure to light. Stable for one year after shipment.  
**Storage Buffer:**  
PBS with 50% Glycerol, 0.05% Proclin300, 0.5% BSA, pH 7.3.  
Aliquoting is unnecessary for -20°C storage

## Selected Validation Data



Immunofluorescent analysis of (4% PFA) fixed paraffin-embedded mouse liver tissue using CoraLite®532 CD107a / LAMP1 antibody (CL532-67300, Clone: 3B2E9) at dilution of 1:200. Heat mediated antigen retrieval with Tris-EDTA buffer (pH 9.0).



Immunofluorescent analysis of (4% PFA) fixed paraffin-embedded mouse liver tissue using CoraLite®532 CD107a / LAMP1 antibody (CL532-67300, Clone: 3B2E9) at dilution of 1:200. Heat mediated antigen retrieval with Tris-EDTA buffer (pH 9.0).