

For Research Use Only

CoraLite® Plus 488 Anti-Human CD19 Rabbit scFv Antibody

Catalog Number:CL488-SF98560



Basic Information

Catalog Number:
CL488-SF98560

Source:
Rabbit

Type:
scFv

Immunogen Catalog Number:
EG3335

GenBank Accession Number:
BC006338

GeneID (NCBI):
930

ENSEMBL Gene ID:
ENSG00000177455

Full Name:
CD19 molecule

Calculated MW:
556 aa, 61 kDa

Purification Method:
Affinity purification

CloneNo.:
250499A2

Recommended Dilutions:
FC: 0.25 ug per 10⁶ cells in a 100 µl suspension

Excitation/Emission maxima wavelengths:
493 nm / 522 nm

Applications

Tested Applications:
FC

Species Specificity:
human

Positive Controls:

FC : human PBMCs,

Background Information

CD19 is a 95 kDa type I transmembrane glycoprotein belonging to the immunoglobulin superfamily (PMID: 2472450). It is expressed by B cells and follicular dendritic cells. CD19 is up-regulated at the step of B-lineage commitment during the differentiation of the hematopoietic stem cell, it remains on during subsequent stages of differentiation until finally down-regulated during terminal differentiation into plasma cells (PMID: 8528044). CD19 is involved in B cell development, activation and differentiation. It is the dominant component for the signaling complex on B cells that includes CD21 (CR2), CD81 (TAPA-1) and CD225 and acts as a critical co-receptor for BCR signal transduction (PMID: 23210908).

Storage

Storage:

Store at 2-8°C. Avoid exposure to light. Stable for one year after shipment.

Storage Buffer:

50mM HEPES, 150mM NaCl, 5mM EDTA, 0.1% CHAPS, 10% Sucrose and 0.1% Proclin300, pH7.3

For technical support and original validation data for this product please contact:

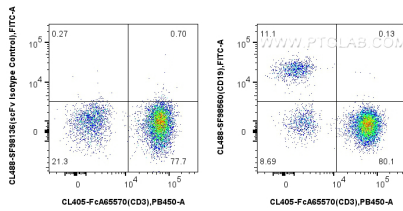
T: 4006900926

E: Proteintech-CN@ptglab.com

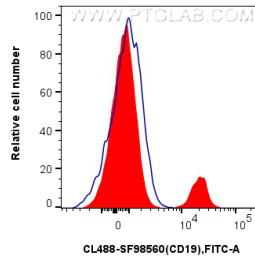
W: ptgcn.com

This product is exclusively available under Proteintech Group brand and is not available to purchase from any other manufacturer.

Selected Validation Data



1x10⁶ human PBMCs were surface stained with CoraLite® Plus 405 Anti-Human CD3 (UCHT1), and 0.25 ug CoraLite® Plus 488 Anti-Human CD19 Rabbit scFv Antibody (CL488-SF98560, Clone: 250499A2) or 0.25 ug CoraLite® Plus 488 Rabbit scFv Isotype Control (CL488-SF98136, Clone: 240953C9). Cells were not fixed. Lymphocytes were gated.



1x10⁶ human PBMCs were surface stained with 0.25 ug CoraLite® Plus 488 Anti-Human CD19 Rabbit scFv Antibody (CL488-SF98560, Clone: 250499A2) (red) or 0.25 ug CoraLite® Plus 488 Rabbit scFv Isotype Control (CL488-SF98136, Clone: 240953C9) (blue). Cells were not fixed. Lymphocytes were gated.